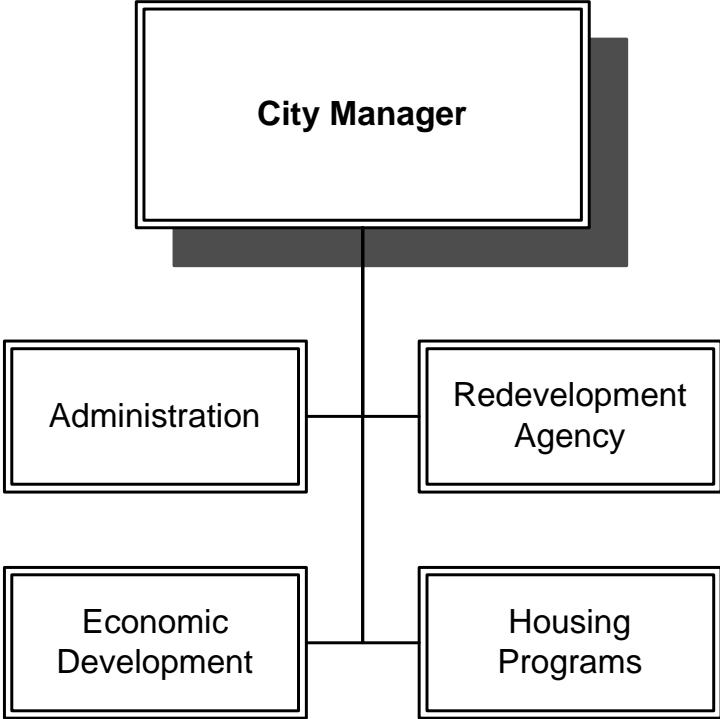


---

---

# City Manager



---

# City Manager

---

## BUDGET SUMMARY

	Actual Expenditures 2003-2004	Adopted Budget 2004-2005	Adopted Budget 2005-2006	Change From Prior Year	% Change
Full Time Equivalent Positions	2.0	2.0	3.0	1.0	50.0%
Salaries & Benefits	\$ 216,895	\$ 255,432	\$ 360,659	\$ 105,227	41.2%
Supplies & Services	23,364	23,491	28,780	5,289	22.5%
Capital Acquisitions	-	-	-	-	0.0%
Contribution to Other Funds	-	-	-	-	0.0%
<b>Total</b>	<b>\$ 240,258</b>	<b>\$ 278,923</b>	<b>\$ 389,439</b>	<b>\$ 110,516</b>	<b>39.6%</b>

### Financing Sources

General Fund	240,258	278,923	389,439
--------------	---------	---------	---------

## PERSONNEL SUMMARY

(shown in full time equivalents)

	Adopted Budget 2004-2005	Adopted Budget 2005-2006
City Manager	1	1
Analyst I/II	0	1
Senior Administrative Assistant	1	1
<b>Total</b>	<b>2.0</b>	<b>3.0</b>

---

---

# City Manager

---

## MISSION STATEMENT

Facilitating the development and implementation of City organizational and community goals, policies and objectives.

## SERVICE DESCRIPTION

Help facilitate the development and implementation of City organizational and community goals, policies, and objectives.

## STRATEGIC ISSUES

1. Planning for the future of the City both internally as well as externally looking to long-term positive outcomes, making Yuba City a desirable place to live and work.
2. Implementing the new General Plan, the downtown Strategic Plan, Infrastructure Plan, and an employee development plan which will produce long-term economic benefits to the City in order to meet its service delivery requirements for a growing city.
3. Impacts from the State fiscal crisis and statewide legislation will have socioeconomic impacts on the City that can result in long-term fiscal implications to the City.

## FY 2004-2005 ACCOMPLISHMENTS

- ❖ Approved development concepts for Plumas Street Streetscape and issued redevelopment bonds.
- ❖ Lobbied for the retention of Beale Air Force Base.
- ❖ Lobbied for and supported the protection of local government revenue sources.
- ❖ Addressed flood control issues with the Department of Water Resources and the Army Corps of Engineers and addressed the City's wastewater discharge permit.

- ❖ Addressed the reorganization of the City's development departments.
- ❖ Developed policies and conducted workshops with the development community regarding City growth policies.

## FY 2005-2006 INITIATIVES

- ❖ Oversee development and implementation of the fiscal impact fee study.
  - ❖ Monitor the implementation of the City's adopted growth policies and reorganization of the City's development departments.
  - ❖ Work with the railroad for acquisition of their right-of-way through Yuba City to a "Rails to Trails" program.
  - ❖ Monitor the development of Plumas Street Streetscape.
  - ❖ Monitor the Specific Plan process and growth issues.
  - ❖ Work with the Utility Department regarding the City's wastewater discharge permit and additional water contracts.
  - ❖ Work with Sutter County, Department of Water Resources, Levee District 1, the Army Corps of Engineers and FEMA regarding levee issues in Yuba City, including the North Feather River Floodplain Study.
  - ❖ Continue to promote the economic vitality of Yuba City including transportation needs.
  - ❖ Continue to develop improved team building and customer service throughout the organization.
  - ❖ Provide municipal government in a way that is responsive to the needs of all Yuba City residents and businesses characterized by an open process and partnership with our residents.
-

---

# City Manager

100-1305

Appropriation Line-Item	Actual 2003-2004	Adopted 2004-2005	Adopted 2005-2006
612 Salaries & Wages	\$ 177,157	\$ 188,030	\$ 255,752
613 Extra Help	-	5,000	5,000
614 Overtime	-	-	-
615 Total Benefits	39,738	62,402	99,907
<b>Salaries &amp; Benefits Sub -Total</b>	<b>216,895</b>	<b>255,432</b>	<b>360,659</b>
622 Telephone	3,558	2,882	4,002
623 Postage & Freight	265	500	500
625 Forms & Supplies	1,828	4,000	4,000
626 Printing & Binding	72	300	300
628 Travel & Meeting	7,582	6,500	8,000
631 Dues & Subscriptions	2,416	1,800	2,500
643 Insurance	3,782	3,267	5,733
658 Technology ISF	3,829	3,642	3,145
660 Other Material and Supplies	32	600	600
<b>Supplies &amp; Services Sub -Total</b>	<b>23,364</b>	<b>23,491</b>	<b>28,780</b>
692 Capital Acquisitions	-	-	-
<b>Acquisitions Sub -Total</b>	<b>-</b>	<b>-</b>	<b>-</b>
<b>Total Appropriations</b>	<b>\$ 240,258</b>	<b>\$ 278,923</b>	<b>\$ 389,439</b>

---