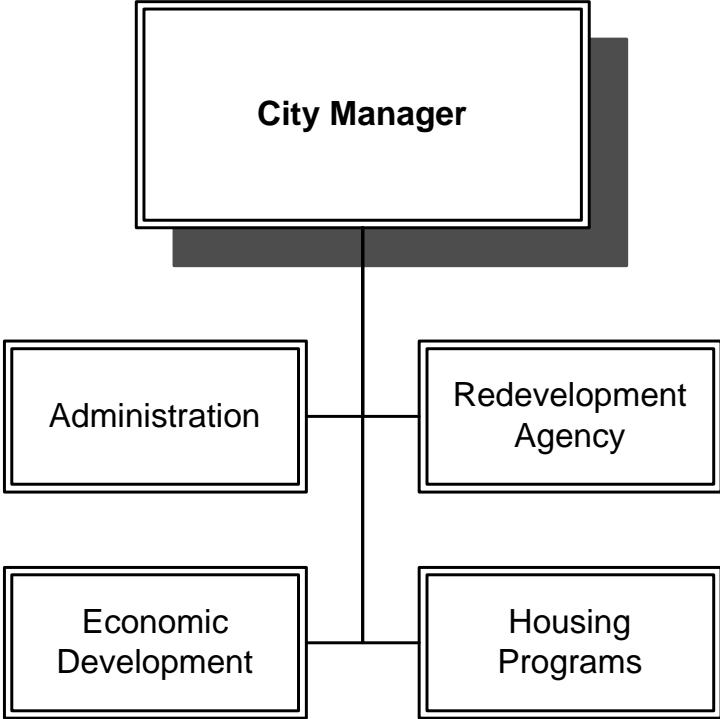

City Manager



City Manager

BUDGET SUMMARY

	Actual Expenditures 2004-2005	Adopted Budget 2005-2006	Adopted Budget 2006-2007	Change From Prior Year	% Change
Full Time Equivalent Positions	2.0	3.0	2.0	-1.0	-33.3%
Salaries & Benefits	\$ 290,679	\$ 360,659	\$ 339,510	\$ (21,149)	-5.9%
Supplies & Services	27,213	28,780	39,553	10,773	37.4%
Capital Acquisitions	-	-	-	-	0.0%
Contribution to Other Funds	-	-	-	-	0.0%
Total	\$ 317,892	\$ 389,439	\$ 379,063	\$ (10,376)	-2.7%

Financing Sources

General Fund	317,892	389,439	379,063
--------------	---------	---------	---------

PERSONNEL SUMMARY

(shown in full time equivalents)

	Adopted Budget 2005-2006	Adopted Budget 2006-2007
City Manager	1	1
Analyst I/II	1	0
Executive Assistant to the City Manager	1	1
Total	3.0	2.0

City Manager

MISSION STATEMENT

Facilitating the development and implementation of City organizational and community goals, policies and objectives.

SERVICE DESCRIPTION

Help facilitate the development and implementation of City organizational and community goals, policies, and objectives.

STRATEGIC ISSUES

1. Planning for the future of the City both internally as well as externally looking to long-term positive outcomes, making Yuba City a desirable place to live and work.
2. Implementing the new General Plan, the downtown Strategic Plan, Infrastructure Plan, and an employee development plan which will produce long-term economic benefits to the City in order to meet its service delivery requirements for a growing city.
3. Ensure implementation of City growth polices to provide for improved quality of life for all City residents.

FY 2005-2006 ACCOMPLISHMENTS

- ❖ Completed the design for Plumas Streetscape, Bridge Street and Gauche Park projects.
- ❖ Successfully campaigned for retention of Beale Air Force Base.
- ❖ Created new department of Development Services joining planning, building and engineering disciplines.
- ❖ Initiated workshops with the development community regarding City growth policies.

FY 2006-2007 INITIATIVES

- ❖ Work with Sutter County, Department of Water Resources, Levee District 1, the Army Corps of Engineers and FEMA regarding levee issues in Yuba City, including the North Feather River Floodplain Study.
 - ❖ Adoption of impact fees, zoning code, use of community facilities districts and completion of master plans and Lincoln East Specific Plan.
 - ❖ Monitor Plumas Streetscape, Bridge Street and Gauche Park projects.
 - ❖ Implement the City's adopted growth policies
 - ❖ Work with the Utility Department regarding the City's wastewater discharge permit and additional water contracts.
 - ❖ Continue to promote the economic vitality of Yuba City, including transportation needs.
 - ❖ Continue to develop improved team building and customer service throughout the organization.
 - ❖ Provide municipal government in a way that is responsive to the needs of all Yuba City residents and businesses characterized by an open process and partnership with our residents.
 - ❖ Work with the railroad for acquisition of their right-of-way through Yuba City for "Rails to Trails" program.
-

City of Yuba City 2006-2007 Budget



City Hall

City Manager

100-1305

Appropriation Line-Item	Actual 2004-05	Adopted 2005-06	Adopted 2006-07
612 Salaries & Wages	\$ 231,746	\$ 255,752	\$ 252,707
613 Extra Help	-	5,000	-
614 Overtime	-	-	-
615 Total Benefits	58,933	99,907	86,803
Salaries & Benefits Sub -Total	290,679	360,659	339,510
622 Telephone	4,111	4,002	2,958
623 Postage & Freight	183	500	500
625 Forms & Supplies	2,473	4,000	4,500
626 Printing & Binding	105	300	300
627 Professional Services	-	-	10,000
628 Travel & Meeting	10,719	8,000	9,500
631 Dues & Subscriptions	2,374	2,500	2,500
643 Insurance	3,267	5,733	5,822
658 Technology ISF	3,642	3,145	2,873
660 Other Material and Supplies	339	600	600
Supplies & Services Sub -Total	27,213	28,780	39,553
692 Capital Acquisitions	-	-	-
Acquisitions Sub -Total	-	-	-
Total Appropriations	\$ 317,892	\$ 389,439	\$ 379,063

City of Yuba City FY 2006-2007 Budget

