

CALIFORNIA HIGHWAY PATROL



CALIFORNIA HIGHWAY PATROL

Established in 1929

CALIFORNIA HIGHWAY PATROL



MISSION

The mission of the California Highway Patrol is to provide the highest level of Safety, Service, and Security to the people of California.

HOLLYWOOD



STRATEGIC PLAN

A plan to identify new and innovative methods to educate our communities on our mission, programs, and how we can improve compliance in the top primary collision factors in California: driving under the influence, speeding, and occupant restraint.

*“EARN THE BADGE
EVERY SINGLE DAY”*



PUBLIC TRUST

Earning the trust of the community through individual evaluation, respect and dignity, and a unified vision.



COMMISSIONER'S VISION

A trusted leader in law enforcement ensuring California is the safest place to live and travel.

CALIFORNIA HIGHWAY PATROL



PROTECTING |

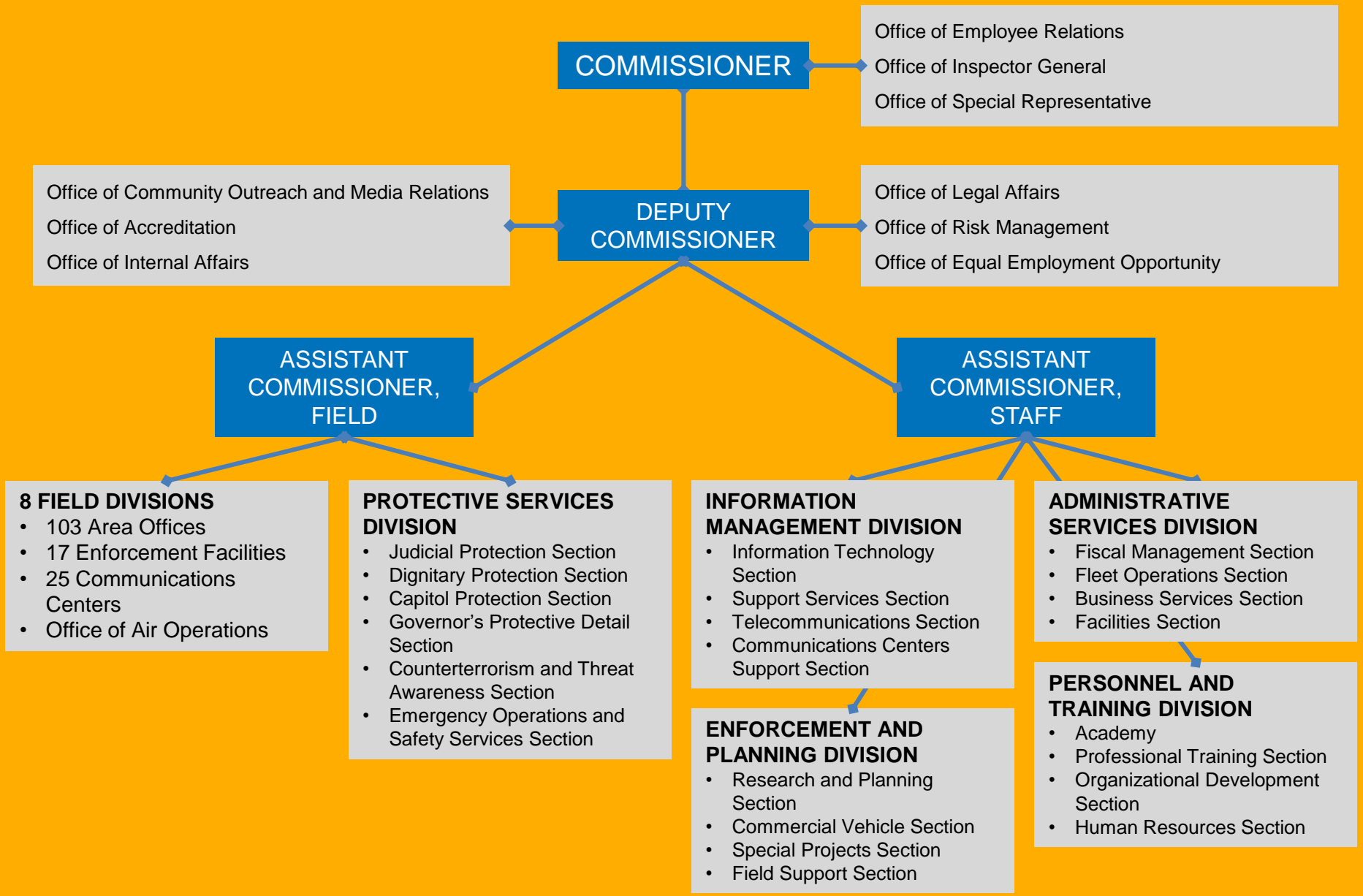
The CHP makes California a great place to live, work, and travel by reducing fatalities, injuries, and crime.

CALIFORNIA HIGHWAY PATROL



SERVING

The CHP is committed to providing first class customer service.



CALIFORNIA HIGHWAY PATROL LOCATIONS



8 DIVISIONS



103 AREA OFFICES



25 COMMUNICATIONS CENTERS



17 COMMERCIAL INSPECTION FACILITIES





CALIFORNIA HIGHWAY PATROL UNIFORM

7,608 Uniformed Personnel

CALIFORNIA HIGHWAY PATROL VEHICLE



2,079 Patrol Vehicles

CALIFORNIA HIGHWAY PATROL MOTORCYCLE

403 Motorcycles





15 Airplanes

**CALIFORNIA
HIGHWAY
PATROL
AIRPLANE**



15 Helicopters

**CALIFORNIA
HIGHWAY
PATROL
HELICOPTER**



CALIFORNIA HIGHWAY PATROL

AIR OPERATIONS

The Department's aircraft fleet includes 15 airplanes and 15 helicopters that provide search and rescue, assists to motorists, and assists to officers. In 2014, the CHP flew 8,821 search and rescue missions, took 3,762 enforcement related actions, assisted in the arrest of 2,362 felons and misdemeanants, and saved 35 lives.

**CALIFORNIA
HIGHWAY
PATROL
K9**



54 Canines



K9

The CHP utilizes canine units across the state for many purposes including highway drug interdiction, bomb detection, criminal apprehension, and assistance to allied agencies. Across the state, the CHP has 46 patrol narcotic detection canines and 8 patrol explosive detection canines.

**CALIFORNIA
HIGHWAY
PATROL
MOUNTED
UNIT**



CALIFORNIA HIGHWAY PATROL



PROTECTING THE STATE

The CHP is the primary law enforcement agency responsible for the protection of state facilities, employees, dignitaries, and equipment.



SWAT TEAM

The Special Weapons and Tactics (SWAT) team resolves or mitigates high-risk or potentially hazardous incidents occurring at state facilities. It also serves as a rapid deployment force and provides counter-assault team support.



CALEA

In November 2014, the CHP was formally recognized with the prestigious Tri-Arc award from the Commission on Accreditation for Law Enforcement Agencies for achieving concurrent accreditation for law enforcement, public safety communications, and public safety training.



ACADEMY

The CHP Academy is a modern, full service law enforcement training facility located in Sacramento. Every CHP Officer attends 28 weeks of training here.



DISPATCH

There are 25 CHP communications/dispatch centers statewide that employ over 900 public safety dispatchers. In an average year, these individuals will handle over 9 million calls for service.



COMMERCIAL VEHICLE SAFETY

The Commercial Enforcement Program has helped California see a reduction in commercial vehicle collisions over the last five years. The program includes:

- Commercial Inspection and Education
- Safety & Farm Labor Vehicle Education
- Radioactive Materials Enforcement and Response
- Annual Bus Terminal Inspection
- Hazardous Materials Technician and Specialist Program



VEHICLE THEFT

On average, a vehicle is stolen every 3 minutes in California which costs Californians nearly one billion dollars per year. The CHP's vehicle theft programs include:

- Cargo Theft Interdiction
- Foreign Export and Recovery
- Salvage Vehicle Inspection
- License Plate Readers
- BAIT Vehicles



MAIT

The Multidisciplinary Accident Investigation Team conducts in-depth investigations and analyses of major traffic collisions throughout the state. The MAIT program also assists with criminal investigations and is recognized as one of the most elite collision reconstruction programs in the nation.



CHILD PASSENGER SAFETY

The CHP provides child safety education and training, child safety seat fitting, and assistance with installation of child passenger restraint systems. The CHP inspects 1,460 car seats a month at over 205 car seat events annually.

AMBER ALERT

The AMBER Alert program allows law enforcement and the public to prevent tragedy before it happens. The CHP coordinates the AMBER Alert program statewide. It has accounted for rescuing 293 children since 2002.

VC 21809 States:

Before passing an emergency vehicle with lights activated you must make a lane change or slow to a reasonable speed.



OUTREACH

The Office of Community Outreach and Media Relations is developing avenues to build public trust and increase transparency.





OUTREACH

The Office of Community Outreach and Media Relations includes:

- Community Outreach
- Marketing
- Media Relations





OUTREACH

170 Public Information Officers (PIO)



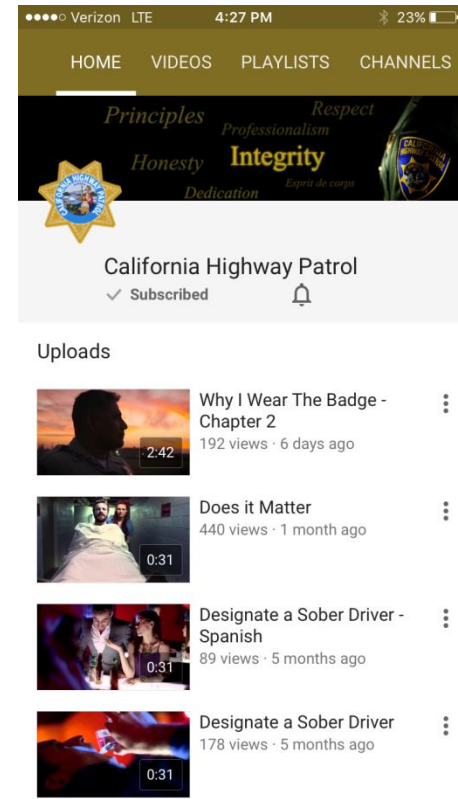


OUTREACH

Providing education to the public through grant funded outreach programs.



CALIFORNIA HIGHWAY PATROL



OUTREACH

Using social media to connect with the public we serve and join the conversation.





OUTREACH

Proactively reaching the media.



Thank you

Do you have any questions?