



State Route 20/State Route 99 Interchange – Approval of PSR-PDS



Diana Langley
Public Works Director

Background



- Caltrans' 2017 State Route 99 Transportation Corridor Concept Report identifies a planned project for the construction of an urban interchange at the SR 20 and SR 99 intersection
 - Right-of-way acquisition in 2021-2036 timeframe at estimated cost of \$31 Million
 - No total cost estimate provided for the interchange

Background



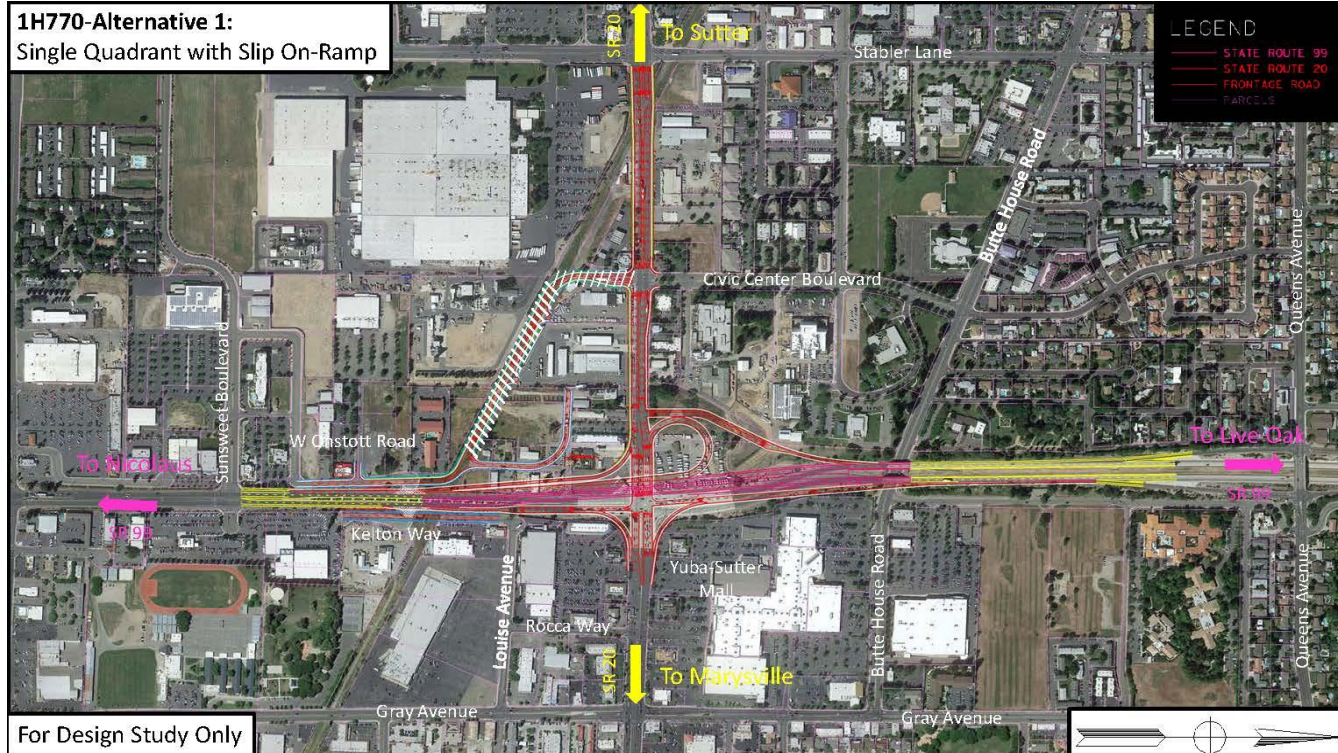
- In early 2016, Council expressed a desire to expedite the consideration of the construction of the interchange
- In August 2016, Council authorized a contract with Caltrans in the amount of \$292,000 for the development of a Project Study Report-Project Development Support Initiation Document (PSR-PDS)

PSR-PDS



- Evaluates 4 Alternatives:
 - Single Quadrant with Slip On-Ramp
 - Single Point
 - Single Quadrant
 - Single Point with Lowering of SR 20 by 12-Feet
- Purpose of PSR-PDS is to provide an analysis of each alternative, but does not make a recommendation regarding a preferred alternative

Single Quadrant with Slip On-Ramp



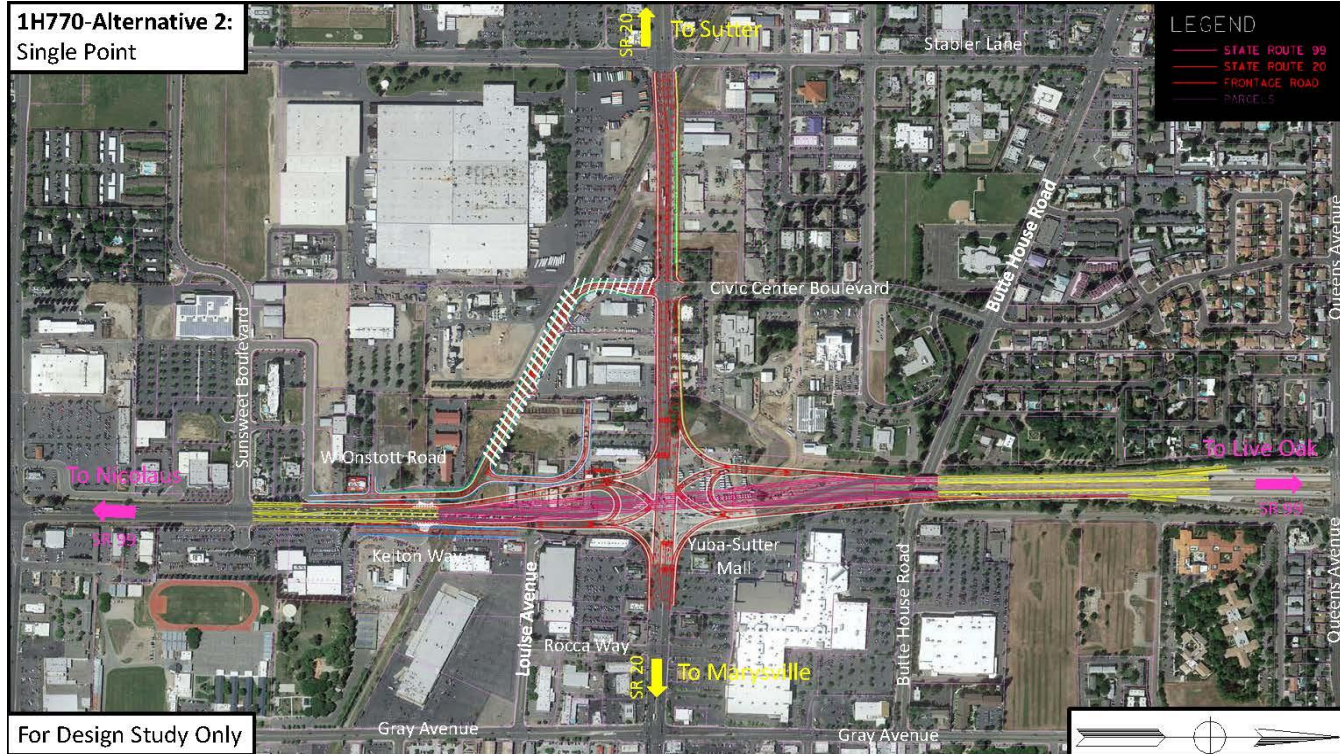
Single Quadrant with Slip On-Ramp



Single Point



1H770-Alternative 2:
Single Point



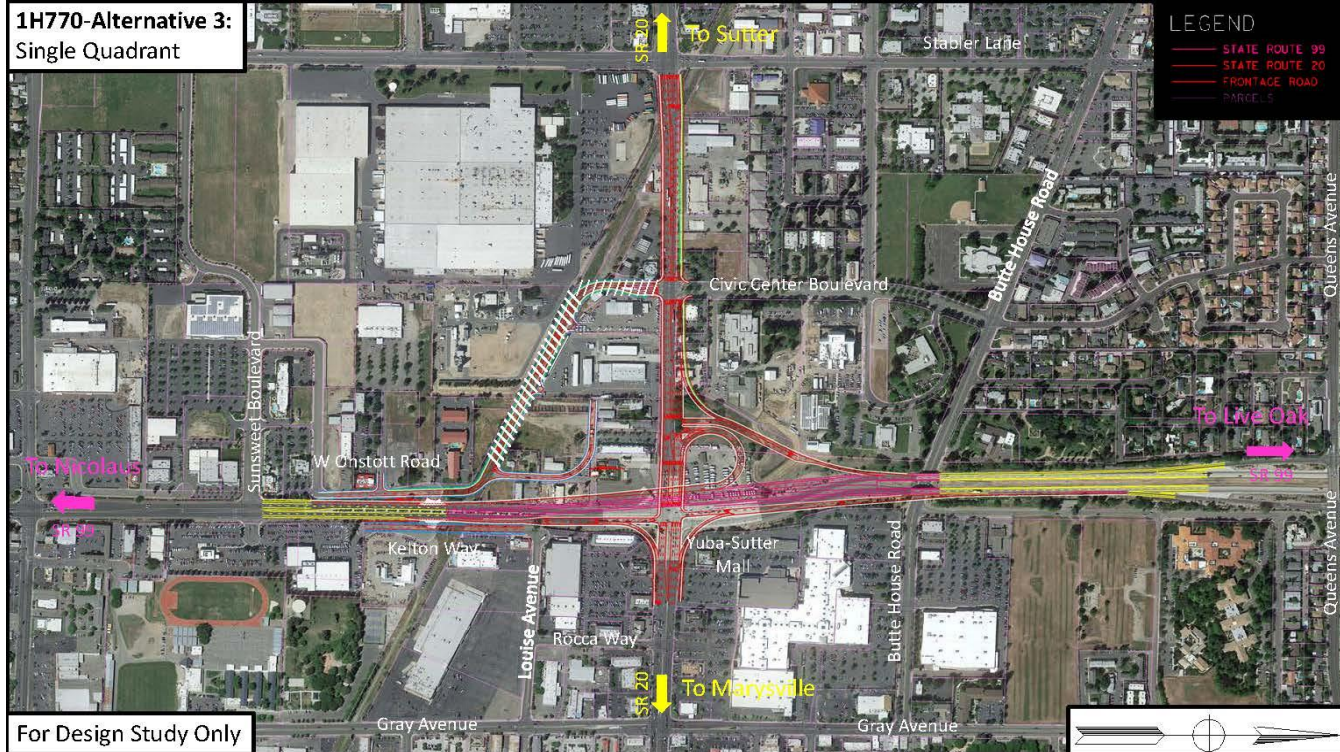
Single Point



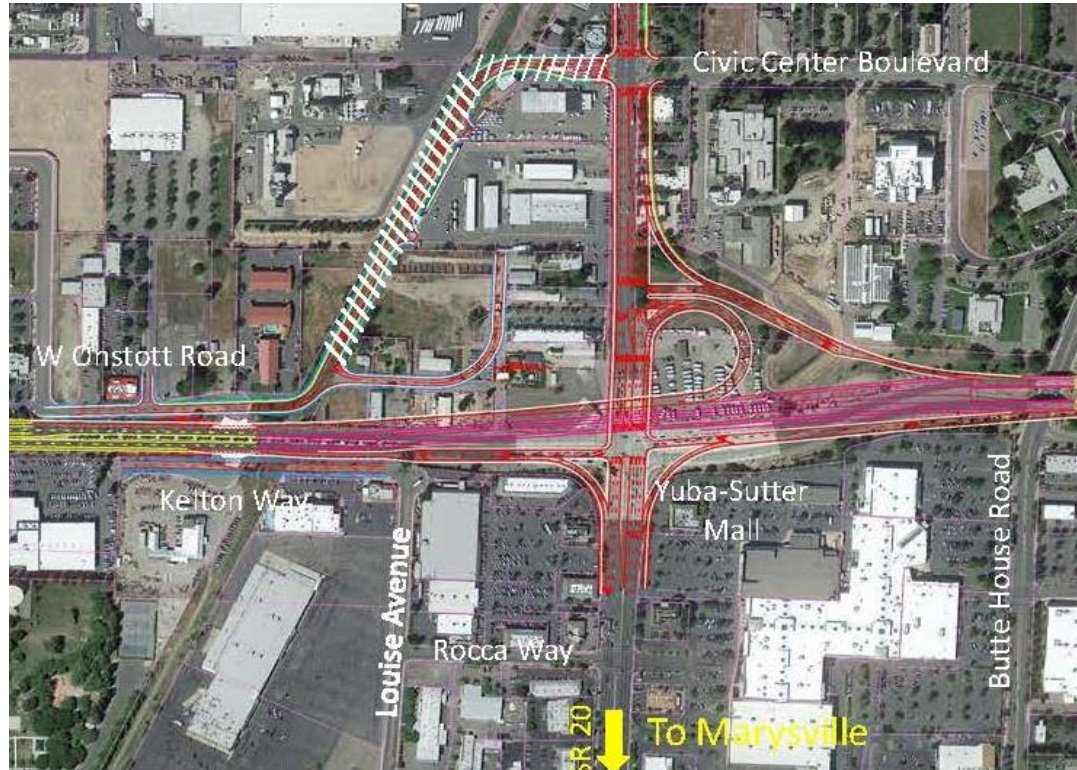
Single Quadrant



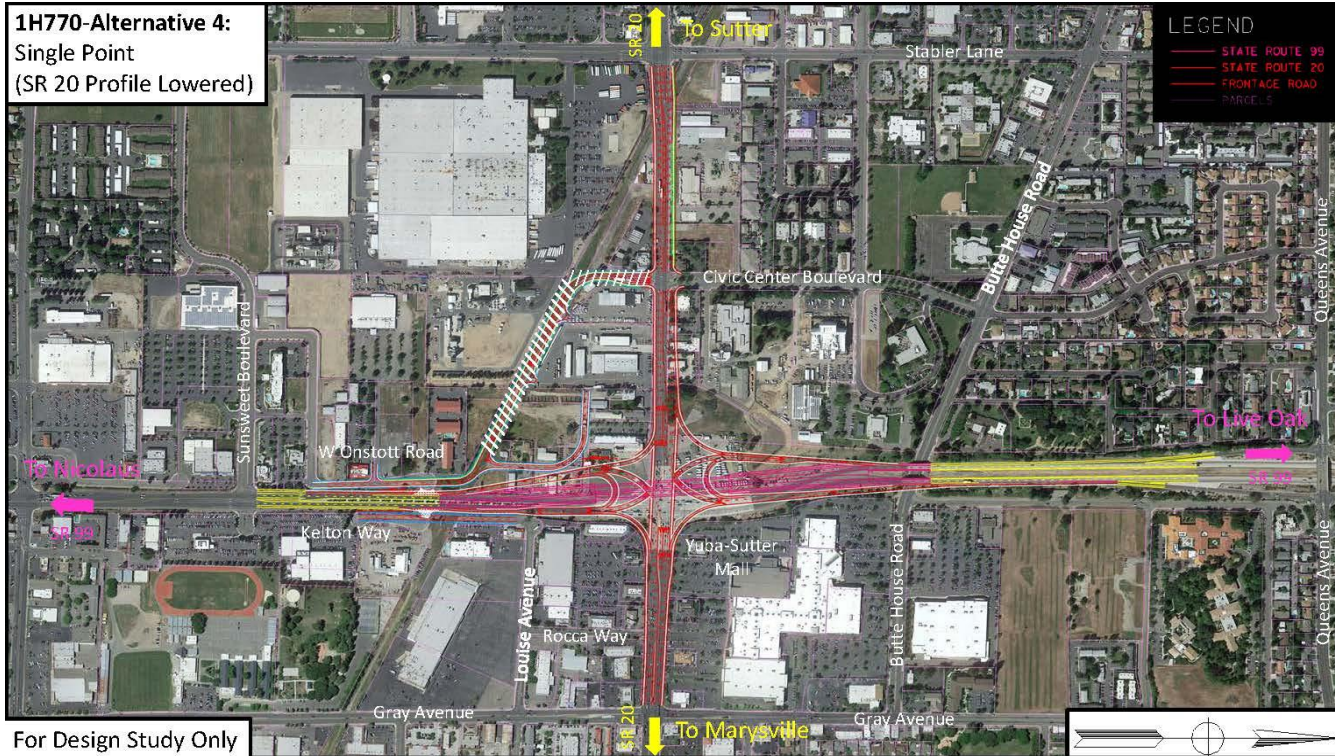
1H770-Alternative 3:
Single Quadrant



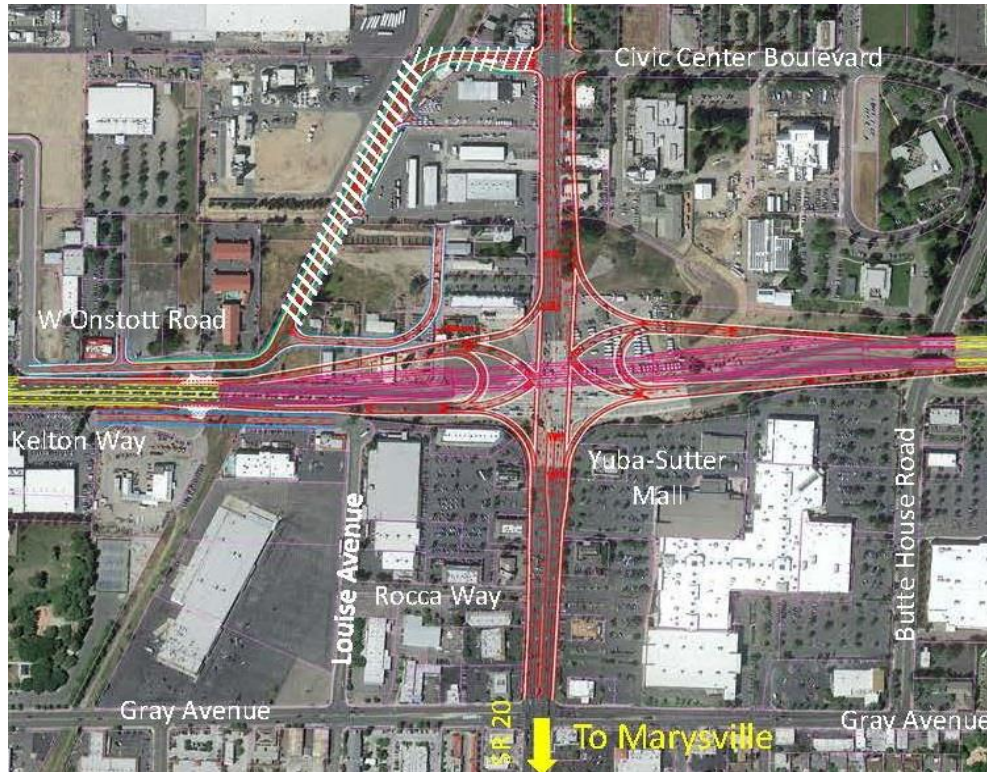
Single Quadrant



Single Point with Lowering of SR 20 by 12'



Single Point with Lowering of SR 20 by 12'



Fiscal Impact



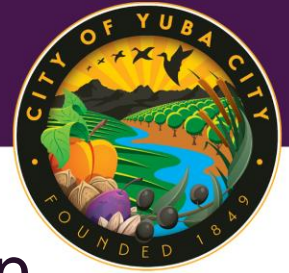
Alternative	Right-of-Way	Construction	Total
Single Quadrant w/ Slip On-Ramp	\$10,979,000	\$89,200,000	\$100,179,000
Single Point	\$14,288,000	\$112,000,000	\$126,288,000
Single Quadrant	\$16,503,000	\$106,100,000	\$122,603,000
Single Point w/ Lowering of SR 20	\$17,298,000	\$113,600,000	\$130,898,000

Fiscal Impact



- Estimated cost for the next phase of the project, Project Approval and Environmental Document (PA&ED), is \$5,587,000
- No funds are programmed at this time at the local, state, or federal level to continue to the next phase

Recommendation



- Authorize the Public Works Director to sign the Project Study Report-Project Development Support for the State Route 20/State Route 99 Interchange