



2017 Storm Damage Repairs to Yuba City Water Intake Access Road and Discharge Ponds – Professional Services Agreement



Mandeep S. Chohan
Senior Engineer

2017 Storm Damage Repairs



Access Road

2017 Storm Damage Repairs

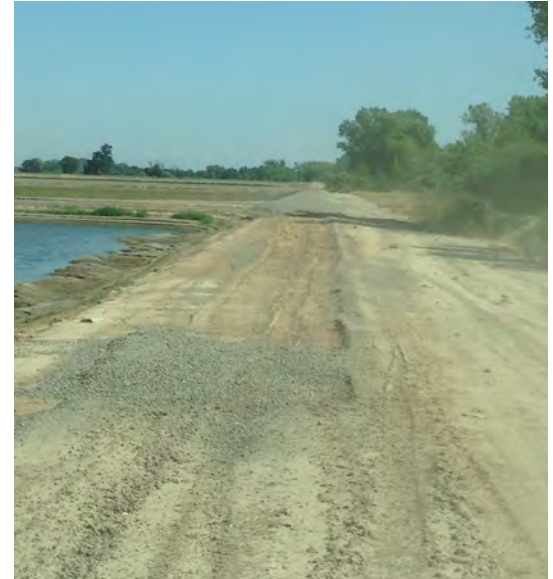


Water Intake
Access Road

2017 Storm Damage Repairs



Ponds



2017 Storm Damage Repairs

Ponds



2017 Storm Damage Repairs



- Requested Financial Aid to repair the damages from Cal-OES/FEMA
- Application for Ponds has been approved
- Application for Access Road under review by FEMA, waiting for information from City
 - Need to complete preliminary design to provide information

2017 Storm Damage Repairs



- Jacobs Engineering Group Inc. was selected for the diffuser project in 2018 through a competitive process
- Jacobs will prepare the necessary engineering design and environmental documents to bid the projects

2017 Storm Damage Repairs



- FEMA and Cal-OES - 93.75%
- Access Road - \$147,464
 - Approximately \$50,000 for preliminary design
- Ponds - \$252,292
 - Approximately \$80,000 for additional required work not in the approved scope

2017 Storm Damage Repairs



- A. Adopt a Resolution authorizing City Manager to finalize and execute, upon approval by the City Attorney as to legal form, a Professional Services Agreement with Jacobs Engineering Group Inc. of Sacramento, CA in the amount of \$147,464 to prepare construction contract and environmental documents for 2017 Storm Damages to Yuba City Water Intake Access Road Repair Project, with the finding that it is in the best interest of the City
- B. Adopt a Resolution authorizing City Manager to finalize and execute, upon approval by the City Attorney as to legal form, a Professional Services Agreement with Jacobs Engineering Group Inc. of Sacramento, CA in the amount of \$252,292 to prepare construction contract and environmental documents for the 2017 Storm Damages to Wastewater Treatment Facility's Discharge Ponds Repair Project, with the finding that it is in the best interest of the City