



Yuba City Fire Department – 2019 Overview

History

- Yuba City Fire was established in 1909 after the City's incorporation.



1907 fire consumed Yuba City's commercial center (Second & Bridge Street) but started the move to incorporation as a city.



Service Area

- Yuba City Fire serves an area of approximately 30 square miles and includes a resident population of about 76,000.
- Service area extends beyond the City's boundaries.
- The response area includes the City and the adjacent unincorporated area, known as CSA-G, under a separate contract with the County of Sutter.

Station Locations

- The Department operates out of five strategically located stations serving the City and adjacent unincorporated County area (CSAG)



Response Area

Station Locations

Fire Administration & Station No.1

824 Clark Avenue

Station No.2

1641 Gray Avenue

Station No.3

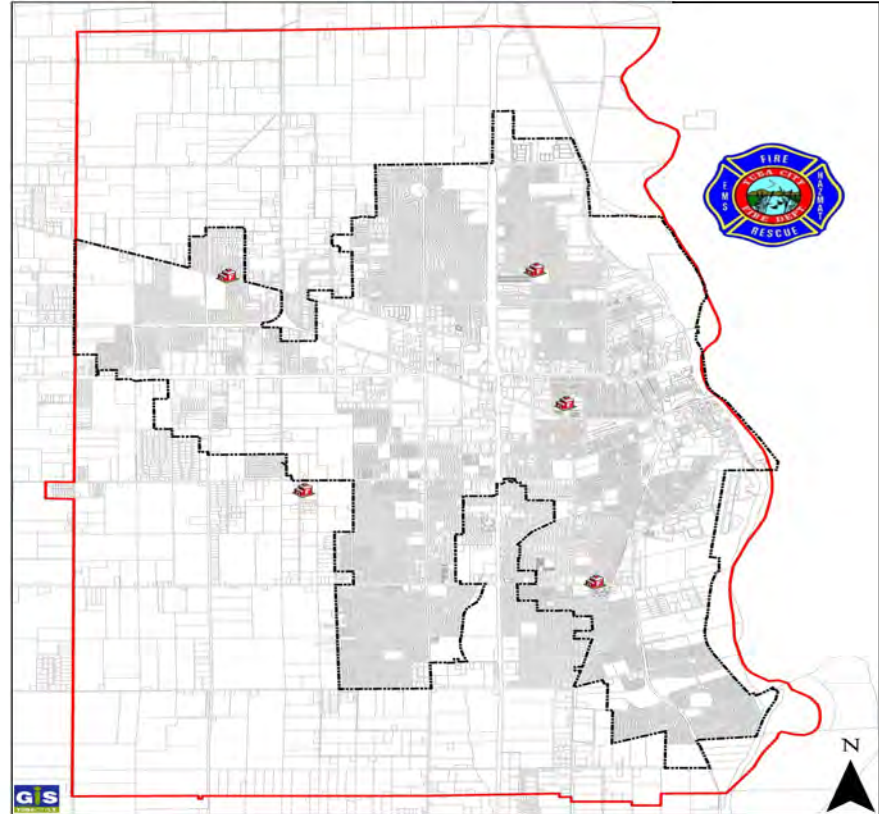
795 Lincoln Road

Station No.4

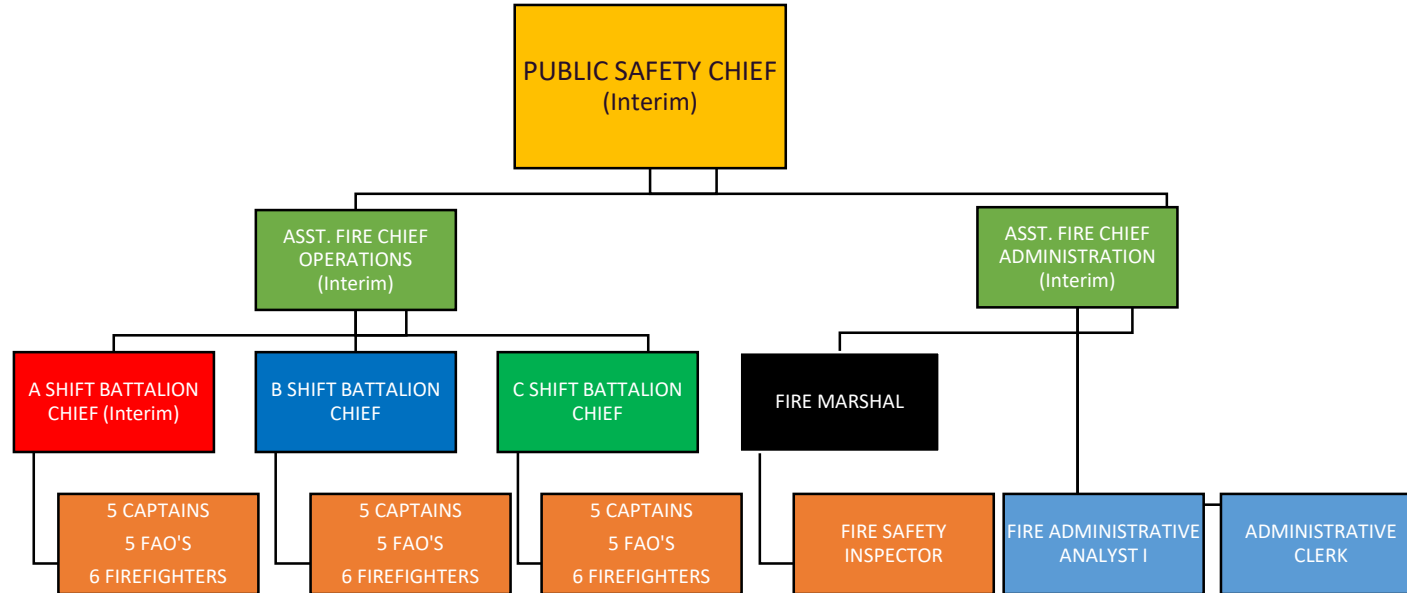
150 Ohleyer Road

Station No.7

2855 Butte House Road



Interim Organization Chart



Fire Operations



Current Staffing

Station	A Shift	B Shift	C Shift
Fire Station No.1	Battalion Chief Fire Captain FAO/Engineer Firefighter SAFER Firefighter (Overstaff)	Battalion Chief Fire Captain FAO/Engineer Firefighter SAFER Firefighter (Overstaff)	Battalion Chief Fire Captain FAO/Engineer Firefighter SAFER Firefighter (Overstaff)
Fire Station No.2	Fire Captain FAO/Engineer Firefighter	Fire Captain FAO/Engineer Firefighter	Fire Captain FAO/Engineer Firefighter
Fire Station No.3	Fire Captain FAO/Engineer Firefighter	Fire Captain FAO/Engineer Firefighter	Fire Captain FAO/Engineer Firefighter
Fire Station No.4	Fire Captain FAO/Engineer SAFER Firefighter	Fire Captain FAO/Engineer SAFER Firefighter	Fire Captain FAO/Engineer SAFER Firefighter
Fire Station No.7	Fire Captain FAO/Engineer SAFER Firefighter	Fire Captain FAO/Engineer SAFER Firefighter	Fire Captain FAO/Engineer SAFER Firefighter



Growth in Calls For Service

Incident Category	2005	2010	2015	2018
Structure Fires	70	66	52	62
Other Fires	235	204	261	251
EMS	4,247	5,167	5,794	6,771
Vehicle Accidents		376	373	412
False Alarms		369	271	266
All other calls (no fire)	1,282	1,120	2,403	2,432
TOTAL	5,834	7,302	9,154	10,194
% Change		+25%	+25%	+11%

Service Call Comparisons

Department	Population Served	Department	Calls For Service (2018)
Clovis	110,273	Vacaville	20,051
Santa Maria	107,014	Redding	14,710
Vacaville	100,032	Chico	12,172
Chico	92,464	Yuba City	10,586
Redding	91,794	Merced	10,086
Napa	90,000	Napa	10,000
Merced	83,081	Clovis	9,813
Manteca	79,268	West Sacramento	9,508
Folsom	78,525	Santa Maria	9,000
Yuba City	76,000	Redlands	8,000
Redlands	73,000	Folsom	7,618
Davis	68,986	Tulare	7,039
Lodi	65,884	Lodi	7,000
Turlock	65,000	Petaluma	6,744
Rocklin	64,838	Turlock	6,360
Tulare	63,855	Manteca	6,000
Petaluma	60,000	Watsonville	5,500
Porterville	59,445	Gilroy	5,412
Gilroy	57,664	Porterville	5,053
Hanford	56,499	Davis	4,800
West Sacramento	53,512	Rocklin	4,651
Watsonville	51,586	Hanford	4,400

Service Cost Comparisons (Cost Per Call)

DEPARTMENT	Department Budget to	Total Number of Service Calls	Cost Per Call
Folsom	\$17,778,365	7,618	\$2,333.71
Davis	\$10,116,694	4,800	\$2,107.64
Petaluma	\$13,900,000	6,744	\$2,061.91
Vacaville	\$23,080,234	20,051	\$1,151.08
Gilroy	\$9,459,368	5,412	\$1,747.85
Lodi	\$11,698,580	7,000	\$1,670.80
Merced	\$10,654,386	10,086	\$1,056.35
Woodland	\$9,753,904	7,700	\$1,266.70
Napa	\$16,500,000	10,000	\$1,650.00
Redlands	\$14,414,492	8,000	\$1,801.81
Redding	\$19,600,000	14,710	\$1,332.43
Rocklin	\$8,271,300	4,651	\$1,778.39
Clovis	\$15,074,000	9,813	\$1,442.78
West Sacramento	\$13,000,000	9,508	\$1,367.27
Manteca	\$5,871,500	6,000	\$978.58
Watsonville	\$7,449,392	5,500	\$1,354.43
Turlock	\$11,800,000	6,360	\$1,855.00
Santa Maria	\$9,938,490	9,000	\$1,855.34
Chico	\$12,333,164	12,172	\$1,013.24
Yuba City	\$10,638,686	10,586	\$1,004.97
Hanford	\$4,951,950	4,400	\$1,125.44
Porterville	\$4,375,377	5053	\$865.90
Tulare	\$17,800,000	7039	\$2,528.77

Service Cost Comparisons (Cost Per Capita)

DEPARTMENT	DEPARTMENT BUDGET	TOTAL SERVICE AREA POPULATION	COST PER CAPITA
Tulare	\$17,800,00	63,855	\$278.76
West Sacramento	\$13,000,000	53,512	\$242.94
Petaluma	\$13,900,000	60,000	\$231.66
Vacaville	\$23,080,234	100,032	\$230.73
Folsom	\$17,778,365	78,525	\$226.40
Redding	\$19,600,000	91,794	\$213.52
Redlands	\$14,414,492	73,000	\$197.46
Napa	\$16,500,000	90,000	\$183.33
Davis	\$12,311,501	68,986	\$178.46
Lodi	\$1,698,580	65,884	\$177.56
Woodland	\$10,433,728	60,012	\$173.86
Turlock	\$11,800,000	70,000	\$168.57
Gilroy	\$9,459,368	57,664	\$164.04
Watsonville	\$7,449,392	51,586	\$144.40
Yuba City	\$10,638,686	76,000	\$139.98
Clovis	\$15,074,000	110,273	\$136.70
Chico	\$12,333,164	92,464	\$133.38
Merced	\$10,654,386	83,081	\$128.24
Rocklin	\$8,271,300	64,838	\$127.57
Santa Maria	\$13,094,451	107,014	\$122.36
Hanford	\$4,951,950	56,499	\$87.65
Manteca	\$5,871,500	79,268	\$74.07
Porterville	\$4,375,377	59,145	\$73.98

Teams

- Yuba-Sutter HazMat Response Team



- Yuba-Sutter Tactical Emergency Medical Team (TEMS) in Support of SWAT



Advanced Technical Rescue Team

- Advanced Technical Rescue (ATR)
 - Confined Space
 - Vaults
 - Trench Rescue
 - Construction Sites
 - Water Rescue
- Water Rescue



Regional & Statewide Response



Public Education & Outreach



Issues - Staffing



- Under our current SAFER Grant.
 - Hired nine limited-term (3-year) full-time firefighters.
 - Provide constant daily staffing of 16 people.
 - When grant ends in August 2021, we lose the nine firefighters and constant daily staffing will be reduced to 13, requiring reductions in station staffing and an increase in response times.

Succession Planning



- Over the last 3 years through retirements, promotions and SAFER Grant positions, the Fire Department has brought in new personnel representing 51% of the staff.
- New personnel require extensive training and commitment of staff time from existing staff.
- People are promoting sooner out of operational necessity to fill mission critical vacancies.

Fire Administration

- Department Administrative Functions
- Fire Prevention Bureau
- Disaster Preparedness Training/Emergency Management/Emergency Coordination
- Grants

Fire Prevention Bureau

- Responsible for
 - Inspections
 - Plan Checks of New Construction
 - Fire Prevention Outreach & Education
 - Arson Investigation
 - New Construction
 - State Mandated Inspections
 - Assemblies/Schools
 - Senate Bill 1205 Inspections
 - Weed Abatement
 - Fireworks Booths/Displays
 - Special Permits (Candles, Tents & Assemblies)
- Staffed by the Fire Marshal and one Fire Safety Inspector.
- Staffing has not changed in 20 years though number of inspections and areas of responsibilities have increased during the same time period.

Fire Prevention Bureau

- Once a building is constructed, it becomes the responsibility of the Fire Department/Fire Prevention Bureau to inspect in perpetuity to assure safety standards are maintained.
- The Fire Prevention Bureau works with local school districts and the business community to maintain fire prevention and life safety standards.

Annual Inspections

Inspections	2005	2010	2015	2018
TOTAL INSPECTIONS	1,239	1,513	1,943	1,468
Bureau	598	477	518	1,165
Company (includes self-inspections in odd years)	641	1,036	1,313	303
Plan Review	691	152	112	155
Violations Corrected	195	983	517	1,845

Since the two most recent SAFER Grant awards, Operations staff have had to focused on training our new limited-term, full-time firefighters, an Company inspections have been reduced.

Mandatory Inspections



2016 “Ghost Ship” warehouse fire in Oakland

Existing law requires the Fire Chief/Fire Marshal to inspect every building used as a public or private school within his or her jurisdiction, for the purpose of enforcing specified building standards, not less than once each year, as provided. Existing law requires every city or county fire department or district providing fire protection services that is required to enforce specified building standards to annually inspect certain structures, including hotels, motels, lodging houses, and apartment houses, for compliance with building standards, as provided.

As a result of the “Ghost Ship” warehouse fire, SB1205 requires every city or county fire department, or district to perform the above-described inspections and to report annually to its administering authority/City Council on the department’s compliance with the requirements. SB1205 requires the administering authority to acknowledge receipt of the report in a resolution or a similar formal document.

YCFD will provide you with a report summarizing our mandated inspection compliance and a resolution acknowledging the City Council’s receipt of the report at your June 16, 2020 meeting.

Emergency Management & Disaster Training



Yuba City EOC activated during the Oroville Dam Auxiliary Spillway Threat

- Emergency Management Coordination
 - Collaborate with Sutter County on development of a County-wide emergency plan.
- Disaster Preparedness
- Employee Disaster Training
 - Coordination of ICS training
 - Joint City-County training
- Emergency Management Coordination with County, State and Federal
- Code Red implementation

Grants

- Secure State, Federal and other grants for purchase of needed SAFER Grant staffing, equipment and funding for vital Department training.
 - Since 2001, the Fire Department has been able to secure over \$6.5 million in grants that has allowed the Department to provide vital staffing and purchase mission essential equipment in a time of budget shortfalls and staffing reductions.
- Assistance to Firefighters Grant
 - Staffing for Adequate Fire and Emergency Response Grant (SAFER)
 - Fire Prevention & Safety Grant
 - Homeland Security Grant
 - Hazard Mitigation Grant
 - Flood Mitigation Grant
 - Department of Water Resources Flood Threat Emergency Response Grant



Issues – Equipment Replacement



Equipment Replacement

EQUIPMENT NEEDS IN THE IMMEDIATE FUTURE

ITEM	FUNCTION	ESTIMATED COST	POTENTIAL FUNDING SOURCE
Second set of structure turnout for each firefighter (Need to purchase in FY 20/21)	Firefighter health and safety. Limited 10-year usable life. Establishes a primary set and a reserve set.	\$105,000	General Fund FEMA is not funding second sets of turnouts at this time
Type I Engine and Equipment	To replace 17-year old Engine 1 in first-out serviced. Standard practice for fire engine life is 15- years in first-out status, and 15-years in reserve status.	\$700,000	General Fund We are not eligible for FEMA grant funding because of the limited age of our overall fleet
Aerial Truck	To replace 27-year old Truck 1. As noted above, fire vehicles have a usable life of approximately 30-years. Truck 1 has been used as a first-out engine when Engine 1 is out-of-service or away on a strike team	\$1.300,000	General Fund We are not eligible for FEMA grant funding because of the limited age of our overall fleet

Issues - Facilities

Fire Station No.2 Renovation

- Top priority project
- Built in 1978 to house a two-person crew.
- Structure has structural and infrastructure problems.
- ADA accessibility and space allocation problems.
- Bids are due September 18 and will be coming back to the City Council in October for consideration.



Issues - Facilities

Fire Station No.1 Replacement & Site Improvements

- Built in 1961 – 58 years ago.
- Structural, electrical, roof, HVAC, plumbing and ADA issues.
- Apparatus bay height limitation for fire engines and aerial truck.
- Need for better site utilization – removal of the off-line water tower.
- Construction of a new communications monopole to handle City communications and AT&T cell antennas.
- Impending failure of asphalt surface at the back of the station.
- Preliminary site plan and budget estimate will soon be available for initial discussion.



Your Yuba City Fire Department

