

CITY OF YUBA CITY
STAFF REPORT

Date: February 4, 2020
To: Honorable Mayor & Members of the City Council
From: Police Department
Presentation by: Jim Runyen, Police Lieutenant

Summary

Subject: Police Department Work Station Modifications Project

Recommendation: Adopt a Resolution awarding the remodel of the Police Department Dispatch Center to Wright Line LLC of Chicago IL, in the amount of \$96,962.17 by piggybacking on state contract pricing, with the finding that it is in the best interest of the City

Fiscal Impact: \$139,862.17 – Account No. 901272-65501 (Police Department Work Station Modifications)

- Dispatch Center
 - \$96,962.17 – Wright Line
 - \$16,000.00 – Lighting, Electrical, & Flooring
- Investigations Unit
 - \$6,000 – Secure Computer Forensics Station
- Administration Hall
 - \$6,820 – Wallpaper Removal & Replacement

Purpose:

To improve and maintain City facility infrastructure.

Background:

The Police Department Dispatch Center is a 24-hour center that handles all incoming emergency and non-emergency calls for the City. The Dispatch Center is responsible to dispatching all emergency services and coordinating necessary resources. The Investigations Unit currently has two workstations dedicated to computer forensics where sensitive information is viewed. These workstations are visible to anyone walking by and more security is needed for this sensitive information. The Administration hall has damaged and faded wallpaper from over the years and is in need of refurbishment.

The Dispatch Center last received a full remodel in the 1990s. The proposed remodel of the Dispatch Center will install new solid flooring to replace carpet that wears out from constant traffic, up-to-date lighting, and industry-standard consoles. The office remodel for the Investigations Unit will allow investigators to work in privacy and provide a secure location for the equipment.

The budgeted amount for these work station improvements was \$140,000, adopted in the Fiscal Year 19/20 budget. The bids for the work came in under budget. With the remaining money, the Police Department Administration would like to repair and replace the wall paper in the hallway that had been damaged and weathered with age. The wall paper has not been changed for about 25 years.

Analysis:

Dispatch Communications Coordinator Tawnya Smallwood researched other recent Dispatch Centers and found that Wright Line specializes in these centers and is a state contractor. Per City Municipal Code Section 2-6.14, the City may piggyback on other agencies' competitive bids, such as this state contract, as it allows for cost and time savings due to economy of scale.

Wright Line LLC was able to draw up plans that specifically meet the needs of our dispatch center. The flooring selected will resist wear, unlike carpet, and is static resistant for all of the electrical equipment in the room. The electrical work and lighting will bring the Dispatch Center up to current standards.

The Investigations Unit remodel consists of installing workstations and storage within an existing office that is currently not being used. This will allow for privacy during sensitive material investigations and secure storage for the equipment and data storage.

Fiscal Impact:

The total cost of the Dispatch Center remodel, Investigations Unit office remodel, and Administration hall upgrades is \$139,862.17. Sufficient funding has been programmed into the Police Department Work Station Modifications CIP account (901272) for these projects. The smaller items that make up the Work Station Modifications project have been or will be bid appropriately per the City's Purchasing Policies.

Alternatives:

Direct staff to conduct a formal bid process for the Dispatch Center remodel in lieu of piggybacking on the state contract.

Recommendation:

Adopt a resolution awarding the remodel of the Police Department Dispatch Center to Wright Line LLC of Chicago IL, in the amount of \$96,962.17 by piggybacking on state contract pricing, with the finding that it is in the best interest of the City.

Attachments:

1. Resolution
 - a. Quote and Design from Wright Line LLC

Prepared by:

/s/ Jim Runyen

Jim Runyen
Police Lieutenant

Submitted by:

/s/ Michael Rock

Michael Rock
City Manager

Reviewed by:

Department Head

RL

Finance

SM

ATTACHMENT A

RESOLUTION NO.

**RESOLUTION OF THE CITY COUNCIL OF THE CITY OF YUBA CITY
AWARDING THE REMODEL OF THE POLICE DEPARTMENT DISPATCH CENTER TO
WRIGHT LINE OF CHICAGO, IL**

WHEREAS, the City of Yuba City desires to piggyback on the state contract to remodel the Police Department Dispatch Center at a competitively bid, negotiated price; and,

WHEREAS, the State of California awarded a contract to Wright Line following a competitive bid process; and,

WHEREAS, City Police and Public Works Department staff have reviewed Wright Line's design and pricing and determined them to be fair, reasonable, and appropriate for the Dispatch Center work stations; and

WHEREAS, the City desires to award the remodel of the Police Department Dispatch Center to Wright Line LLC of Chicago in the amount of \$96,962.17 by piggybacking on state contract pricing.

NOW, THEREFORE, be it resolved by the City Council of Yuba City that the remodel of the Police Department Dispatch Center be awarded to Wright Line LLC of Chicago in the amount of \$96,962.17 by piggybacking on state contract pricing, with the finding that it is in the best interest of the City.

The foregoing resolution was duly and regularly introduced, passed, and adopted by the City Council of the City of Yuba City at a regular meeting thereof held on the 4th day of February 2020.

AYES:

NOES:

ABSENT:

Shon Harris, Mayor

ATTEST:

Patricia Buckland, City Clerk

APPROVED AS TO FORM
COUNSEL FOR YUBA CITY:

Shannon Chaffin, City Attorney
Aleshire & Wynder, LLP

Attachment(s):

Quote and Design from Wright Line

Wright Line Quote for Yuba City Police Department

Customer Name: Tawnya Smallwood
Address: 1545 Poole Blvd
 Yuba City, CA 99999
Customer Phone: 530-822-4661
Email Address: tsmallwo@yubacity.net

Lotus Quote No: Q86003_03470 Rev 11
Today's Date: 1/7/2019

Ship Contact: Tawnya Smallwood
Ship Phone: 5308224661
Shipping Comments: Installer to perform INSPR

WL Rep Name: Dan Williams
WL Rep Phone: 916-276-8234
WL Rep Email: DanWilliams@Eaton.com

Inside Delivery: No	Receiving Dock: No
Floor No:	Remove Debris: No
Elevators: None	Union: No
Truck with Lift Gate: Yes	

LN	Qty	Item No	Description (Colors/Comments)	Unit Price	Dis	G	Ext Price
Dispatch Console							
1	1	PCPD3628	Cpu Docker Steel: Black	\$1,084.03	0.00%	G	\$1,084.03
2	4	G911U-A01	DPF1C Control Pad	\$100.70	27.00%		\$294.04
3	4	G623B303030	Fab Core Skin Kit 30x30x30 Steel: Black - Fabric: N/A	\$786.52	27.00%		\$2,296.64
4	2	PLCS48	48" OH Comp Shell STEEL: Black	\$279.61	0.00%	G	\$559.21
5	2	PLCD48F	48" Fab Comp Drs STEEL: Black - Fabric: N/A	\$198.12	0.00%	G	\$396.23
6	2	PVEWT232	Transition Vertical End Trim T2 (16/16) Steel: Black	\$88.22	0.00%	G	\$176.44
7	4	PET45116	45d Stretched Conn ERGO T1 (16) Steel: Black	\$198.12	0.00%	G	\$792.46
8	4	PET45232	45d Stretched Conn ERGO T2 (16/16) Steel: Black	\$315.49	0.00%	G	\$1,261.96
9	4	G110C303030	Dual 30X30X30, 90, Co, For E-Zone Steel: N/A - Laminate: N/A	\$5,978.40	27.00%		\$17,456.93
10	12	PC3029S1	30" Core, Single Sided Steel: Black	\$292.31	0.00%	G	\$3,507.77
11	1	PC3629S1	36" Core, Single Sided Steel: Black	\$339.41	0.00%	G	\$339.41
12	2	PC4229S1	42" Core, Single Sided Steel: Black	\$388.01	0.00%	G	\$776.02
13	4	PC4829S1	48" Core, Single Sided Steel: Black	\$437.35	0.00%	G	\$1,749.40
14	1	PRR36UP	36" Rotating Resource under W/S Steel: Black	\$1,540.07	0.00%	G	\$1,540.07
15	2	C845	Box/Box/File Mobile Pedestal Steel: Black	\$284.94	0.00%	G	\$569.87
16	18	PMW3016S	30x16 Modular Wall SS Steel: Black	\$320.72	0.00%	G	\$5,773.02
17	2	PMW4816S	48X16 Modular Wall Ss Steel: Black	\$361.09	0.00%	G	\$722.19
18	2	PDW3616S	36x16 Display Wall SS Steel: Black	\$437.35	0.00%	G	\$874.70
19	8	PDW4816S	48X16 Display Wall Ss Steel: Black	\$580.89	0.00%	G	\$4,647.13
20	2	PDW4216S	42x16 Display Wall SS Steel: Black	\$485.20	0.00%	G	\$970.39
21	2	PVEWT116	Transition Vertical End Trim T1 (16)	\$59.06	0.00%	G	\$118.12

22	18	PWFP3016	Steel: Black 30x16 Fabric Insert (user fac) Fabric: Mingle Biscuit	\$126.35	0.00%	G	\$2,274.22
23	12	PDWT30S1	30" Wide Wall Top Trim, SS Steel: Black	\$88.22	0.00%	G	\$1,058.61
24	1	PDWT36S1	36" Wide Wall Top Trim, Ss Steel: Black	\$97.94	0.00%	G	\$97.94
25	2	PDWT42S1	42" Wide Wall Top Trim, SS Steel: Black	\$112.14	0.00%	G	\$224.28
26	4	PDWT48S1	48" Wide Wall Top Trim, SS Steel: Black	\$107.66	0.00%	G	\$430.62
27	3	PCPL2428	CPU Docker Left Steel: Black	\$678.08	0.00%	G	\$2,034.24
28	3	PCPR2428	CPU Docker Right Steel: Black	\$678.08	0.00%	G	\$2,034.24
29	1	PUPRFLH1	30"D Full Depth Upright LH Steel: Black	\$194.38	0.00%	G	\$194.38
30	1	PUPRFRH1	30"D Full Depth Upright Rh Steel: Black	\$194.38	0.00%	G	\$194.38
31	2	PUPRSRH1	30"D Cantilever Top Support Rh Steel: Black	\$56.82	0.00%	G	\$113.64
32	2	PUPRSLH1	30"D Cantilever Top Support LH Steel: Black	\$56.82	0.00%	G	\$113.64
33	4	PCSK1900	19" Wide Core Skin Steel: Black	\$56.82	0.00%	G	\$227.27
34	2	PCSK2200	22" Wide Core Skin Steel: Black	\$91.96	0.00%	G	\$183.91
35	2	PVET16T1	Vertical End Trim T1 (16) Steel: Black	\$56.82	0.00%	G	\$113.64
36	2	PBW4230D	42x30 Bullnose Worksurface Steel: N/A - Laminate: Black (Black Trim)	\$268.39	0.00%	G	\$536.78
37	2	PBW4830D	48x30 Bullnose Worksurface Steel: N/A - Laminate: Black (Black Trim)	\$290.82	0.00%	G	\$581.64
38	1	PBT4830L	48x30 Bullnose Trans Left Steel: N/A - Laminate: Black (Black Trim)	\$290.82	0.00%	G	\$290.82
39	1	PBT4830R	48x30 Bullnose Trans Right Steel: N/A - Laminate: Black (Black Trim)	\$290.82	0.00%	G	\$290.82
40	1	PPWS36901	36X90 Penin Wks 30"D Conn <u>Steel: N/A - Laminate: N/A</u> Dispatch Console	\$959.30	27.00%		\$700.29
							\$57,601.39

Env Controls

1	4	PEPECU1	Ezone - Personal Comfort System	\$3,410.00	27.00%		\$9,957.20
---	---	---------	---------------------------------	------------	--------	--	------------

Power Panels

1	4	PAPG2416	24" Access Panel For Villa Power Module Steel: Black	\$86.72	0.00%	G	\$346.89
2	4	PAPG2116	21" Access Panel For Villa Power Module Steel: Black	\$84.48	0.00%	G	\$337.92
3	1	PAPG3616	36" Access Panel For Villa Power Module Steel: Black	\$104.66	0.00%	G	\$104.66
4	9	TOAVILC6	<u>Villa C-D-B-72</u> Power Panels	\$130.00	27.00%		<u>\$854.10</u> \$1,643.57

Slatwall Shelving

1	2	ASHELFLAM224X12	Slatwall Lam Shelf Steel: N/A - Laminate: N/A	\$131.58	0.00%	G	\$263.16
2	1	ASHELFLAM336X12	Slatwall Lam Shelf Steel: N/A - Laminate: N/A	\$173.44	0.00%	G	\$173.44
3	12	ABINDER	Steel Binder Holder <u>Steel: N/A</u> Statwall Shelving	\$81.49	0.00%	G	\$977.87
							\$1,414.47

Task Light

1	4	TOALTASREV	Revo Led Double Arm Task Light Use Revo Mounting Components Base: B0 Black Aluminum	\$372.00	27.00%		\$1,086.24
2	4	TOALTASREV	<u>Revo Slatwall Mount</u>	\$45.00	27.00%		<u>\$131.40</u>

		Task Light				\$1,217.64
Dispatch Manager						
1	1	CWL4224	42 X 24 Linear Ws Steel: N/A - Laminate: N/A	\$162.23	0.00%	G \$162.23
2	1	CWCT4848R	48 X 48 Corner Trans Ws Right Steel: N/A - Laminate: N/A	\$429.87	0.00%	G \$429.87
3	1	CWSS4860L	48X60 Integrated Corner 30L 24R Steel: N/A - Laminate: N/A	\$2,037.23	0.00%	G \$2,037.23
4	1	CWL3624	36 X 24 Linear Ws Steel: N/A - Laminate: N/A	\$129.34	0.00%	G \$129.34
5	1	CM60C	60" F Modesty Pnl Cnr Steel: N/A	\$65.04	0.00%	G \$65.04
6	1	CLF2465L	24" Full Leg 65" H Upright Steel: N/A	\$162.23	0.00%	G \$162.23
7	1	CLLT2465	24" Shared Trans Leg 65" H Upright Steel: N/A	\$213.07	0.00%	G \$213.07
8	1	CLS3065R	30" Standard Leg 65" H Upright Steel: N/A	\$174.19	0.00%	G \$174.19
9	2	CLS2429L	24" Standard Leg 29" H Upright Steel: N/A	\$118.12	0.00%	G \$236.24
10	1	CLF2429R	24" Full Leg 29" H Upright Steel: N/A	\$134.57	0.00%	G \$134.57
11	1	CLC65	65" H Corner Leg Steel: N/A	\$183.91	0.00%	G \$183.91
12	1	COFJ4220L	42 X 20 Tack Board/J Hook Pnl Steel: N/A - Fabric: N/A	\$106.16	0.00%	G \$106.16
13	2	COF4820C	48 X 20 Tack Board Pnl Cnr Steel: N/A - Fabric: N/A	\$101.67	0.00%	G \$203.35
14	1	COFJ4816C	48 X 16 Tack Board/J Hook Pnl Cnr Steel: N/A - Fabric: N/A	\$106.16	0.00%	G \$106.16
15	1	CLCS42L	42 Oh Comp Shell Steel: N/A	\$257.92	0.00%	G \$257.92
16	1	CDC42L	42" Wood Cab Drs Steel: N/A - Laminate: N/A	\$201.85	0.00%	G \$201.85
17	1	CLCS48C	48" Oh Comp Shell Cnr Steel: N/A	\$285.59	0.00%	G \$285.59
18	1	CDC48C	48" Wood Cab Drs Cnr Steel: N/A - Laminate: N/A	\$213.07	0.00%	G \$213.07
19	1	C845	Box/Box/File Mobile Pedestal Steel: N/A	\$284.94	0.00%	G \$284.94
20	1	CLS2429R	24" Standard Leg 29" H Upright <u>Steel: N/A</u>	\$118.12	0.00%	G \$118.12
Dispatch Manager						\$5,705.08
Cab for Warrant						
1	1	1M02	28" Classic Opti Cab Opti: N/A - Opti: N/A Warrants	\$505.38	0.00%	G \$505.38
2	4	AM10RF	Drawer,4" W/Front Warrants	\$121.11	0.00%	G \$484.45
3	4	UM41	Kit,3 Rail Div-36" <u>Warrants</u>	\$37.38	0.00%	G \$149.52
Cab for Warrant						\$1,139.35
Cab for Restraining Order						
1	1	1M23	28" Cabinet, Underws. 2 Mod Drawers Opti: Black - Opti: Black	\$708.73	0.00%	G \$708.73
2	1	UM77	Back Panel R/O	\$26.91	0.00%	G \$26.91
3	1	U047FF	Center Rail For Bin Drw-Plat - Set Of 3	\$19.04	0.00%	G \$19.04
4	1	U045FF	<u>Dividers,Univ Shelves (Set Of 3)</u>	\$17.63	0.00%	G <u>\$17.63</u>
Cab for Restraining Order						\$772.31
Cab for Hallway (H1)						
1	1	4Y52	42" Sidewinder W/ 3 Universal Fixed Shelves Steel: N/A	\$844.80	0.00%	G \$844.80
2	1	U045FF	<u>Dividers,Univ Shelves (Set Of 3)</u>	\$17.63	0.00%	G <u>\$17.63</u>

Cab for Hallway (H1) \$862.43

Cab for Hall (H2 & H3)

1	2	4Y02	42" Sidewinder Shell SideWinder: Black - SideWinder: Black	\$683.31	0.00%	G	\$1,366.63
2	2	AM05FF	Shelf,Univrsl Fixed-No Dividers	\$74.01	0.00%	G	\$148.03
3	4	AM14RF	12" Bin Drawer	\$174.94	0.00%	G	\$699.76
4	2	U045FF	<u>Dividers,Univ Shelves (Set Of 3)</u>	\$17.63	0.00%	G	<u>\$35.26</u>
							Cab for Hall (H2 & H3) \$2,249.68

Cab Disp Mgr 2 (DM2)

1	1	1M23	28" Cabinet, Underws. 2 Mod Drawers Opti: N/A - Opti: N/A - under the work surface	\$708.73	0.00%	G	\$708.73
2	1	U047FF	Center Rail For Bin Drw-Plat - Set Of 3	\$19.04	0.00%	G	\$19.04
3	1	UM77	Back Panel R/O	\$26.91	0.00%	G	\$26.91
4	1	U045FF	<u>Dividers,Univ Shelves (Set Of 3)</u>	\$17.63	0.00%	G	<u>\$17.63</u>
							Cab Disp Mgr 2 (DM2) \$772.31

Cab for Disp Mgr 1 (DM1)

1	1	8Y56	84" 6 Level Binder Cabinet SideWinder: N/A - SideWinder: N/A Tall cab w/fixed shelves	\$1,143.84	0.00%	G	\$1,143.84
2	3	U045FF	<u>Dividers,Univ Shelves (Set Of 3)</u>	\$17.63	0.00%	G	<u>\$52.90</u>
							Cab for Disp Mgr 1 (DM1) \$1,196.74

Installation

1	1	999926	W/L Install Installation/consolidate product at installer locale/inside delivery/PM for 2 days	\$11,230.00	0.00%		\$11,230.00
---	---	--------	---	-------------	-------	--	-------------

SubTotal	\$95,762.17
Transportation	\$1,200.00
	Plus Applicable
Tax	Sales Tax
Total	\$96,962.17

Terms

NET 30, pending credit approval.

Disclaimers

Installation, Tax and Transportation Charges, if provided, are estimates only

Accepted By

Prepared by Wright Line:

Date

Customer Signature

Wright Line Signature

1/7/2019

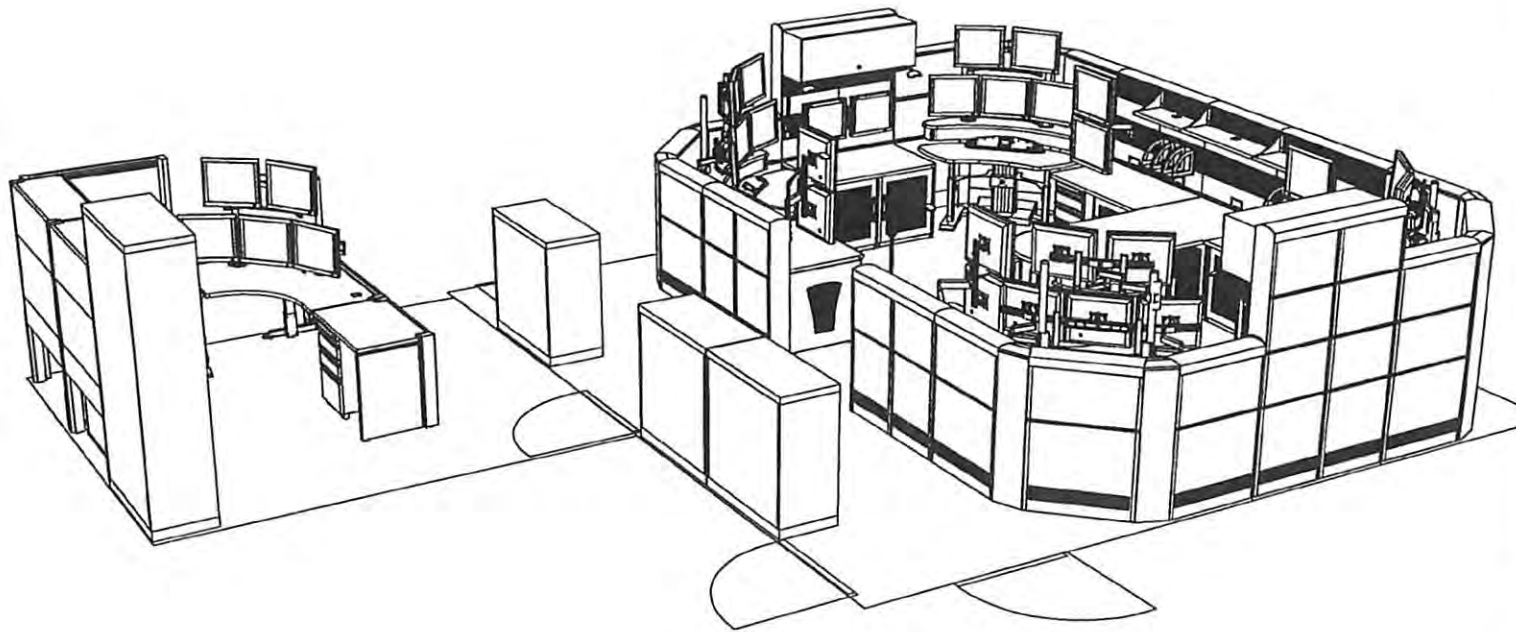
Customer Printed Name

- The foregoing constitutes a written order accepted by the customer and Wright Line for the purchase of the goods described. Terms and conditions which also apply to this purchase order appear on the Terms & Conditions of Sale form and Warranty provisions, which constitute material parts of this order.
- Proposal valid for 30 days, except during special promotions. Proposals with special promotions are valid for the term of the promotion only, but not to exceed 30 days.
- Buyer to provide color requirements on their Purchase Order. If buyer fails to identify color requirements on the Purchase Order, buyer accepts the colors identified on the sellers quote as the approved configuration, and the Sales Order acknowledgement.

Wright Line's remit-to address is:
Wright Line LLC
28204 Network Pl
Chicago, IL 60673-1282

Federal Tax ID: 03-0471268
Duns#: 001438084
Cage Code: 81824

PO Submission:
Reference quote proposal number
and forward purchase order to:
onlineordering@eaton.com



Eaton Corporation - Confidential and Proprietary
 This document, including the drawing and information contained hereon, is confidential and is the exclusive property of Eaton Corporation or its affiliates, and is merely on loan and subject to recall by Eaton Corporation and/or its affiliates at any time. By taking possession of this document, the recipient acknowledges and agrees that this document cannot be used in any manner adverse to the interests of Eaton Corporation or its affiliates, and that no portion of this document may be copied or otherwise reproduced without the prior written consent of Eaton Corporation or its affiliates. In the case of conflicting contractual provisions, this notice shall govern the status of this document.

Q86003_03470.dwg

Boite, arti kisan

SAVE DATE: 2/14/2018 5:41:10 PM

PLOT DATE: 2/14/2018 5:43:14 PM



Sales Representative:
 Dan Williams

Western

Prepared for:
 Yuba City Police Department
 Floor Plan

SCALE: CUSTOM

Product:
 Profile
 Date:
 02/14/2018

Drawn By:
 Arti
 Quote:
 Q86003_03470



Sales Representative:
Dan Williams

Western

Prepared for:
Yuba City Police Department
Floor Plan

SCALE: CUSTOM

Product:
Profile

Date:

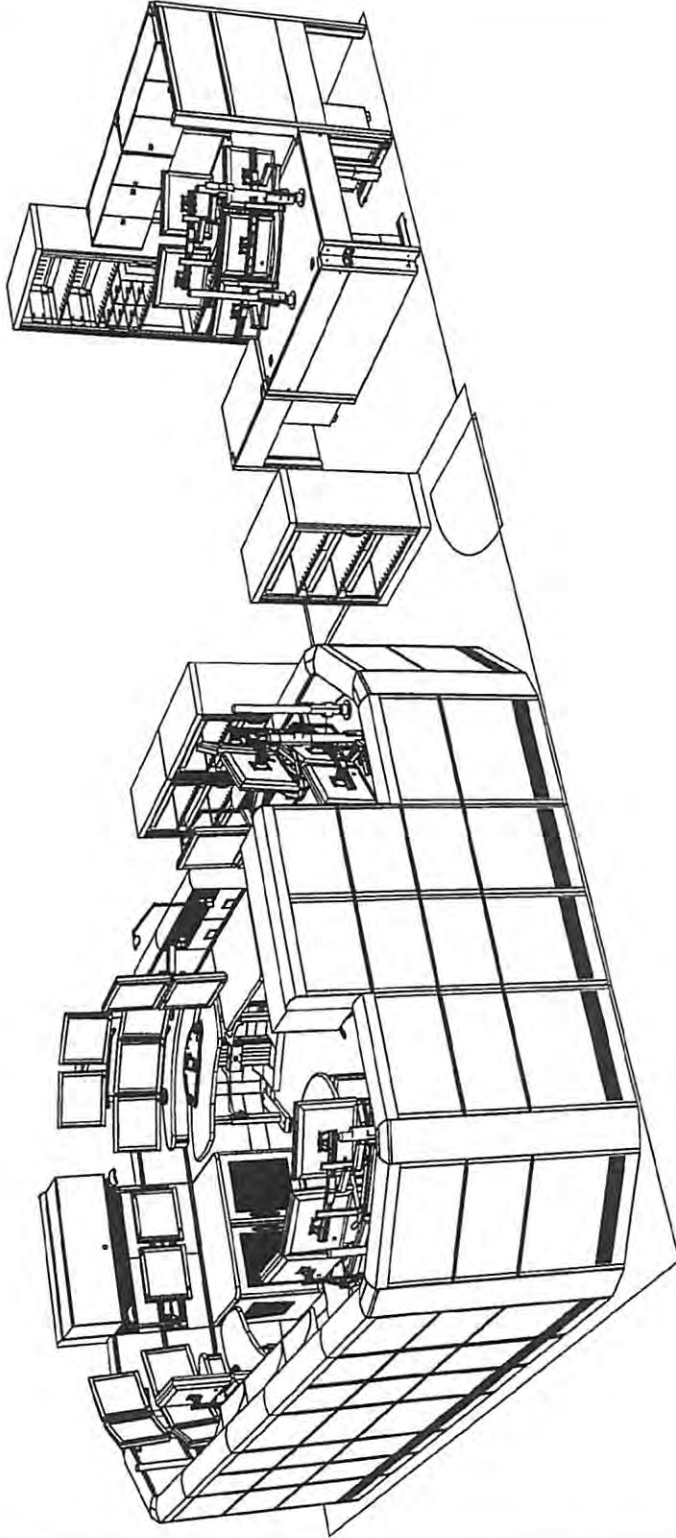
02/14/2018

Drawn By:

Arti

Quote:

Q86003_03470



Eaton Corporation - Confidential and Proprietary
This document, including the drawing and information contained hereon, is confidential and is the exclusive property of Eaton Corporation or its affiliates, and is merely on loan and subject to recall by Eaton Corporation and/or its affiliates at any time. By taking possession of this document, the recipient acknowledges and agrees that this document cannot be used in any manner adverse to the interests of Eaton Corporation or its affiliates, and that no portion of this document may be copied or otherwise reproduced without the prior written consent of Eaton Corporation or its affiliates. In the case of conflicting contractual provisions, this notice shall govern the status of this document.



Sales Representative:
Dan Williams

Western

Prepared for:
Yuba City Police Department
Floor Plan

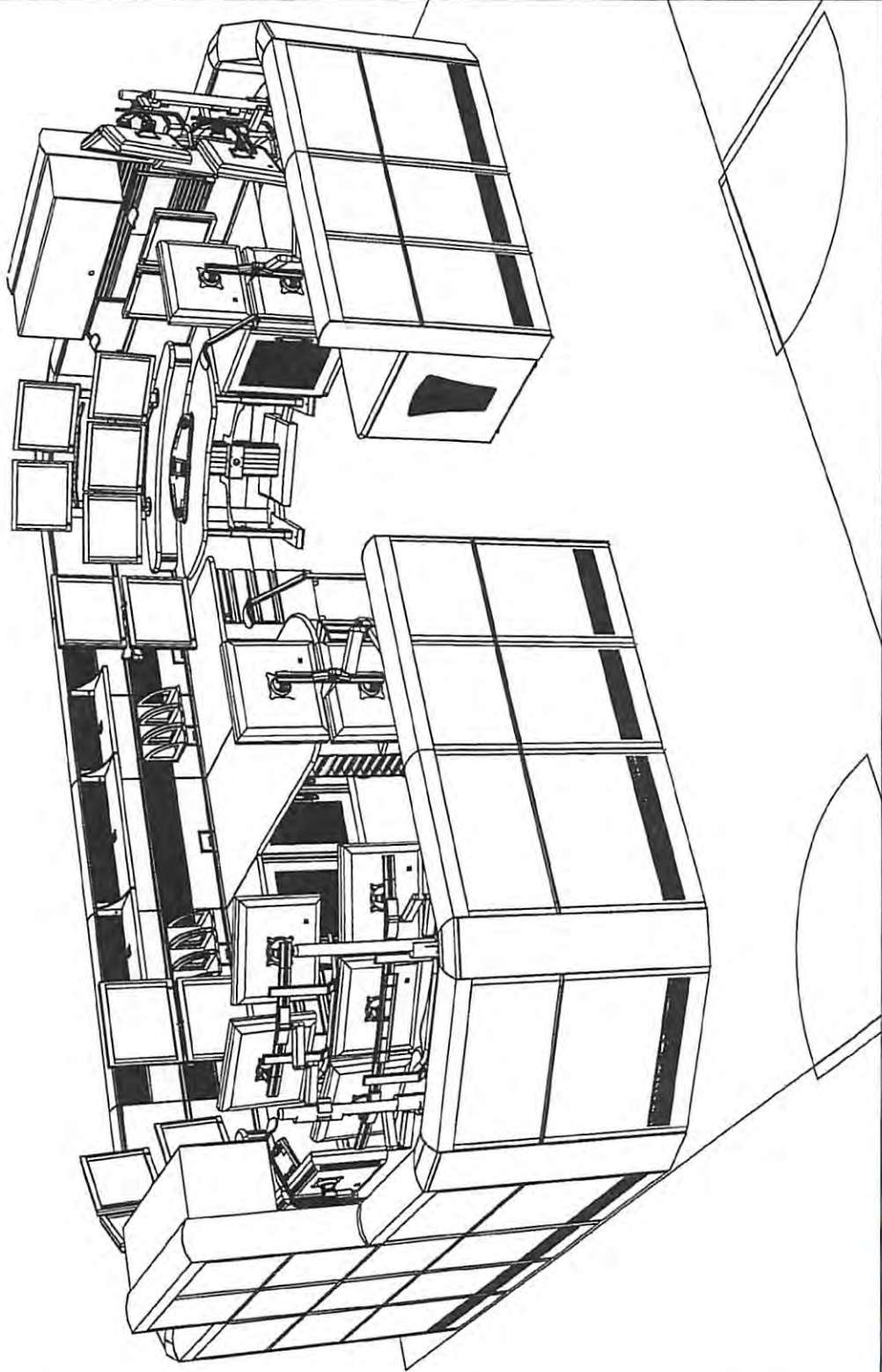
SCALE: CUSTOM

Product:
Profile

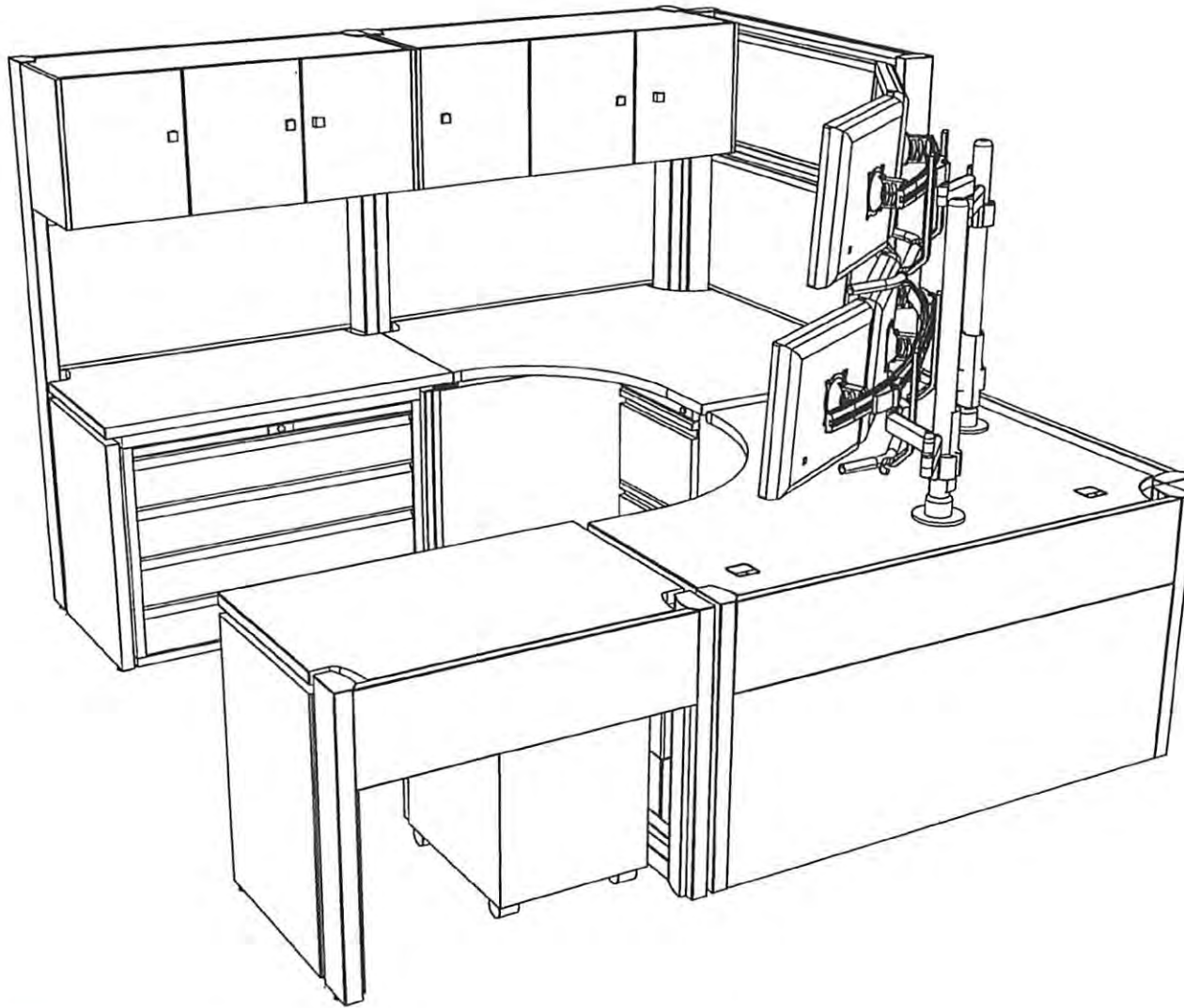
Date:
02/14/2018

Drawn By:
Arti

Quote:
QB66003_03470



Eaton Corporation - Confidential and Proprietary
This document, including the drawing and information contained therein, is confidential and is the exclusive property of Eaton Corporation or its affiliates, and is merely on loan and subject to recall by Eaton Corporation and/or its affiliates at any time. By taking possession of this document, the recipient acknowledges and agrees that this document cannot be used in any manner adverse to the interests of Eaton Corporation or its affiliates, and that no portion of this document may be copied or otherwise reproduced without the prior written consent of Eaton Corporation or its affiliates. In the case of conflicting contractual provisions, this notice shall govern the status of this document.



Eaton Corporation - Confidential and Proprietary
 This document, including the drawing and information contained herein, is confidential and is the exclusive property of Eaton Corporation or its affiliates, and is merely on loan and subject to recall by Eaton Corporation and/or its affiliates at any time. By taking possession of this document, the recipient acknowledges and agrees that this document cannot be used in any manner adverse to the interests of Eaton Corporation or its affiliates, and that no portion of this document may be copied or otherwise reproduced without the prior written consent of Eaton Corporation or its affiliates. In the case of conflicting contractual provisions, this notice shall govern the status of this document.

Q86003_03470.dwg

Borfe, arti kisan

SAVE DATE: 2/14/2018 5:41:10 PM

PLOT DATE: 2/14/2018 5:45:13 PM



Sales Representative:
 Dan Williams
 Western

Prepared for:
 Yuba City Police Department
 Floor Plan
 SCALE: CUSTOM

Product:
 Profile
 Date:
 02/14/2018

Drawn By:
 Arti
 Quote:
 Q86003_03470



Sales Representative:
Dan Williams

Western

Prepared for:
Yuba City Police Department
Floor Plan

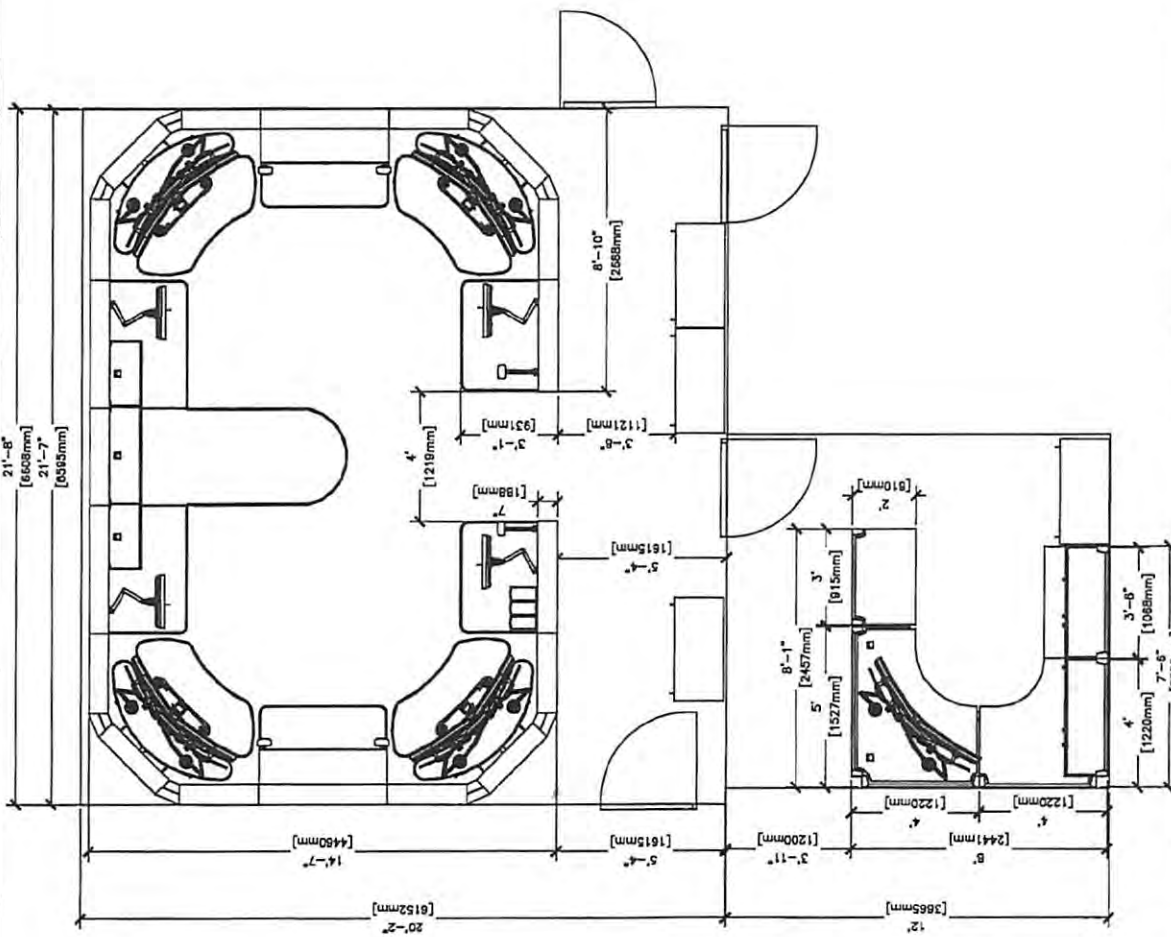
SCALE: CUSTOM

Product:
Profile
Date:

02/14/2018

Drawn By:
Arti
Quote:

QB6003_03470



Eaton Corporation - Confidential and Proprietary
This document, including the drawing and information contained therein, is confidential and is the exclusive property of Eaton Corporation or its affiliates, and is merely on loan and subject to recall by Eaton Corporation and/or its affiliates at any time. By taking possession of this document, the recipient acknowledges and agrees that this document cannot be used in any manner adverse to the interests of Eaton Corporation or its affiliates, and that no portion of this document may be copied or otherwise reproduced without the prior written consent of Eaton Corporation or its affiliates. In the case of conflicting contractual provisions, this notice shall govern the status of this document.

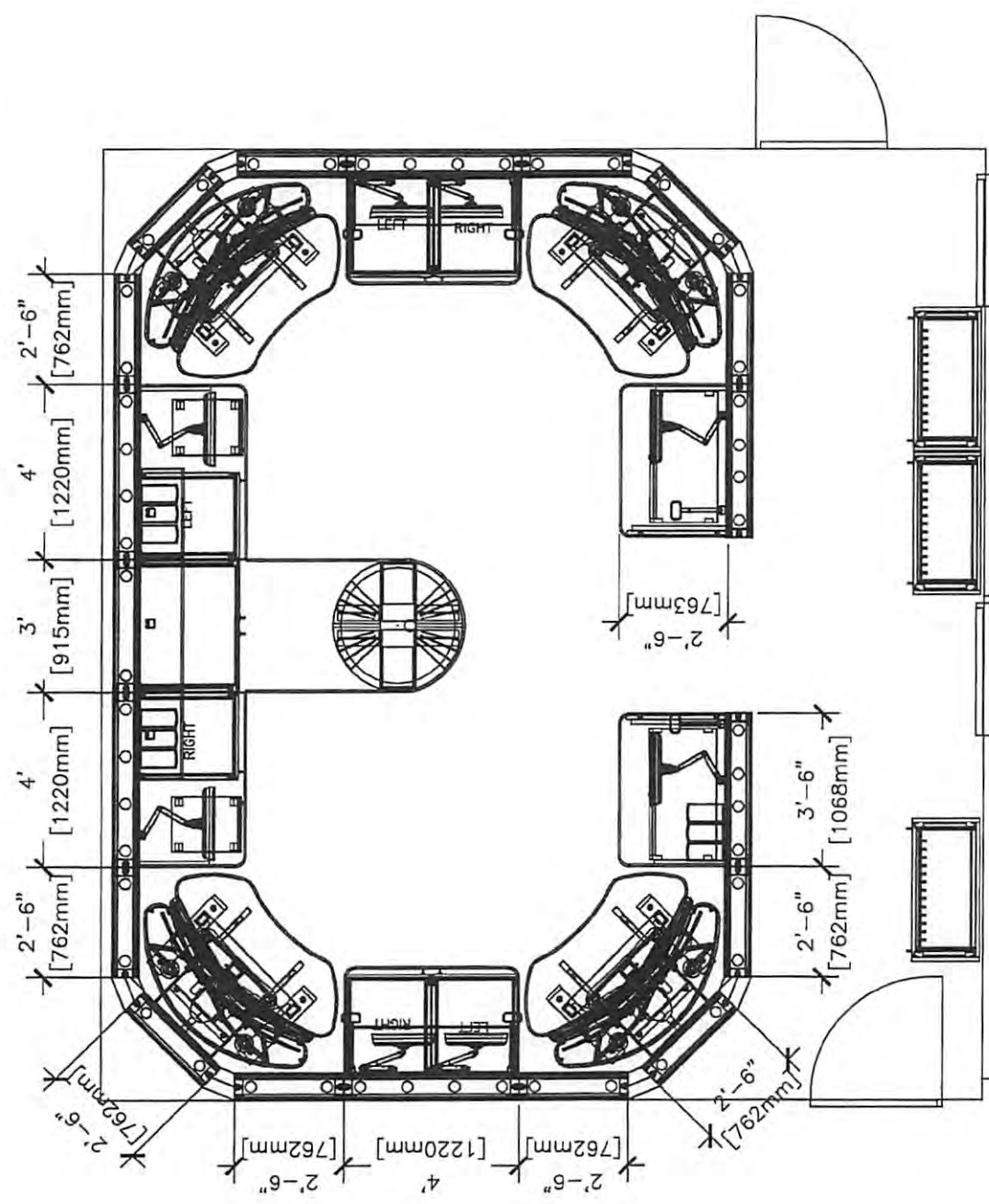


Sales Representative:
Dan Williams
Western

Prepared for:
Yuba City Police Department
Floor Plan
SCALE: CUSTOM

Product Profile
Date: 02/14/2018
Drawn By: Arti
Quote: QB6003_03470


Eaton Corporation - Confidential and Proprietary
This document, including the drawing and information contained therein, is confidential and is the exclusive property of Eaton Corporation or its affiliates, and is merely on loan and subject to recall by Eaton Corporation and/or its affiliates at any time. By taking possession of this document, the recipient acknowledges and agrees that this document cannot be used in any manner adverse to the interests of Eaton Corporation or its affiliates, and that no portion of this document may be copied or otherwise reproduced without the prior written consent of Eaton Corporation or its affiliates. In the case of conflicting contractual provisions, this notice shall govern the status of this document.



ITEM LIST			
Ln.	QTY	PART NO	DESCRIPTION
0250	4	G110C303030-Z	Dual 30x30x30, 90, CO, for e-Zone
0260	4	G623B303030-T	Fab Core Skin Kit 30x30x30
0290	4	PAPG2116	21" Access Panel For Villa Power Module
0300	4	PAPG2416	24" Access Panel For Villa Power Module
0310	2	PAPG3616	36" Access Panel For Villa Power Module
0320	1	PBT4830L	48 x 30 Transition Bullnose Worksurface LH
0330	1	PBT4830R	48 x 30 Transition Bullnose Worksurface RH
0340	2	PBW4830D	48 x 30 Bullnose Worksurface
0350	12	PC3029S1	30" Profile Core, Single Sided with Back Skins
0360	2	PC3629S1	36" Profile Core, Single Sided with Back Skins
0370	2	PC4229S1	42" Wide, Steel Core, Single Sided, with Rear Steel Skins
0380	4	PC4829S1	48" Profile Core, Single Sided with Back Skins
0390	2	PCPD3628	CPU Docker
0400	3	PCPL2428	Double CPU Docker, Left Swing Door
0410	3	PCPR2428	Double CPU Docker, Right Swing Door
0420	4	PCSK1900	19" Wide Removable Core Skin, Steel,
0430	2	PCSK2200	22"W Removable Skin for Profile Core
0440	4	PDW3616S	36"W 16"H Profile FPD Wall, Single Sided
0450	2	PDW4216S	42"W 16"H Profile FPD Wall, Single Sided
0460	8	PDW4816S	48"W 16"H Profile FPD Wall, Single Sided
0470	12	PDWT30S1	30" FDP Wall Top Trim, Single Sided
0480	2	PDWT36S1	36" FDP Wall Top Trim, Single Sided
0490	2	PDWT42S1	42" Wide Wall Top Trim, Single Sided
0500	4	PDWT48S1	48" FDP Wall Top Trim, Single Sided
0520	4	PET45116	45d Stretched Conn ERGO T1 (16)
0530	4	PET45232	45d Stretched Conn ERGO T2 (16/16)
0540	2	PLCD48F	48" Fab Comp Drs
0550	2	PLCS48	48" OH Comp Shell
0560	18	PMW3016S	30"W x 16"H Profile Modular Wall, Single Sided
0570	2	PMW4816S	48"W x 16"H Profile Modular Wall, Single Sided
0580	1	PPWS36901	36X90 Penin Wks 30"D Conn
0590	1	PRR36UP	36" Rotating Resource under W/S
0600	1	PUPRFLH1	Profile Full Depth LH Upright 30"
0610	1	PUPRFRH1	Profile Full Depth RH Upright 30"
0620	2	PUPRSLH1	Profile Top Support - LH 30"
0630	2	PUPRSRH1	Profile Top Support - RH 30"
0640	2	PVET16T1	Vertical End Trim for Tier 1
0650	2	PVEWT116	Transition Panel
0660	2	PVEWT232	Transition Vertical End Trim T2 (16/16)
0670	18	PWFP3016	30" Fabric Insert
0680	2	PBW4230D	42x30 Bullnose Worksurface

Eaton Corporation - Confidential and Proprietary
 This document, including the drawing and information contained thereon, is confidential and is the exclusive property of Eaton Corporation or its affiliates, and is merely loaned and subject to recall by Eaton Corporation and/or its affiliates at any time. By taking possession of this document, the recipient acknowledges and agrees that this document cannot be used in any manner adverse to the interests of Eaton Corporation or its affiliates, and that no portion of this document may be copied or otherwise reproduced without the prior written consent of Eaton Corporation or its affiliates. In the case of conflicting contractual provisions, this notice shall govern the status of this document.

BOM Created on - 02/14/2018 10:33:07

	Sales Representative: Dan Williams	Prepared for: Yuba City Police Department Floor Plan	Product: Profile	Drawn By: Arti
	Western		Date: 02/14/2018	Quote: Q86003_03470

CUSTOMER PROJECT REVIEW SHEET:

Final Layout Meets Requirements
 Room Dimensions are Accurate
 Fpds and CPU sizes have been verified

Customer Initials

Product Line:
Steel Color Choice:
Laminate Color Choice:
Edge Banding Choice:
Fabric Color Choice:

Product Line:
Steel Color Choice:
Laminate Color Choice:
Edge Banding Choice:
Fabric Color Choice:

Product Line:
Steel Color Choice:
Laminate Color Choice:
Edge Banding Choice:
Fabric Color Choice:

Optional Items shown May not be on Order:
*Please review and list any shown that are not on order- Monitors, Seating, Mobile Pedistals, Filing cabinets, other equipment, etc

Additional Project Notes:

Installation Scope of Work Defined:
*See Installation Checklist for Guidance

Rep Signature:	Customer Signature:	Date:
X _____	X _____	_____

Eaton Corporation - Confidential and Proprietary
 This document, including the drawing and information contained thereon, is confidential and is the exclusive property of Eaton Corporation or its affiliates, and is merely on loan and subject to recall by Eaton Corporation and/or its affiliates at any time. By taking possession of this document, the recipient acknowledges and agrees that this document cannot be used in any manner adverse to the interests of Eaton Corporation or its affiliates, and that no portion of this document may be copied or otherwise reproduced without the prior written consent of Eaton Corporation or its affiliates. In the case of conflicting contractual provisions, this notice shall govern the status of this document.



Sales Representative:
 Dan Williams
 Western

Prepared for:
 Yuba City Police Department
 Floor Plan

Product Profile
 Date: 02/14/2018

Drawn By:
 Arti
 Quote: Q86003_03470