



# 2019 Inflow & Infiltration Project



**Presentation By:**  
**Diana Langley, Interim City Manager**

# 2019 Inflow & Infiltration Project - Background

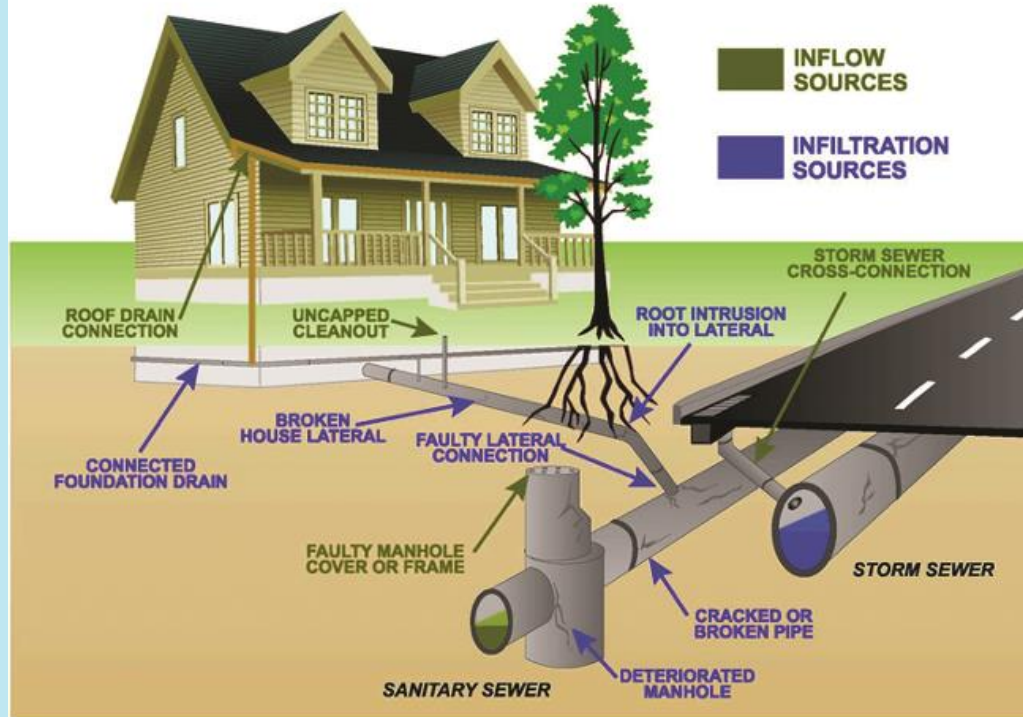


## What is I&I?

I&I stands for inflow and infiltration.

**Inflow** is the flow of stormwater into the sanitary sewer system through connections like roof drains, foundation drains, and basement sump pumps.

**Infiltration** is groundwater seeping into sewer pipes, including private sewer laterals, through cracks and broken pipe joints.



# 2019 Inflow & Infiltration Project – Schedule & Vicinity Map



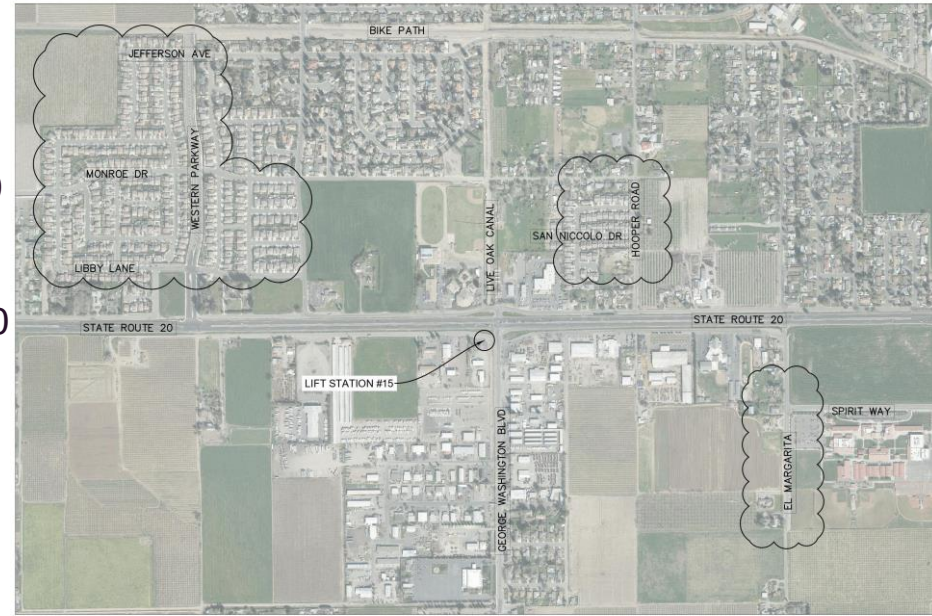
Engineer's Estimate: \$265,000

- CIP Account No. 1104

Proposed Project Timeline:

- Advertise for bid: June 2020
- Award contract: July 2020
- Start of construction: Sept. 2020
- Complete construction: Fall 2020

2019 Inflow and Infiltration Location Map



# 2019 Inflow & Infiltration Project - Recommendation



Adopt a resolution approving the plans and specifications for the 2019 Inflow & Infiltration Project and authorizing advertisement for bids on the project.