



# Feasibility Study for Abandoned Railroad Corridor (Grant Award) August 18, 2020



**Presentation By:**  
**Diana Langlely, Interim City Manager/Public Works Director**

# Feasibility Study for Abandoned Railroad Corridor Background

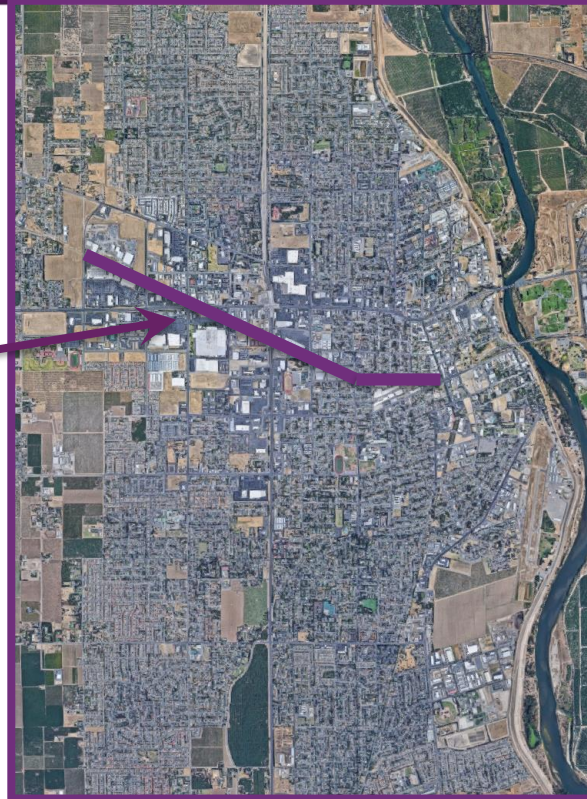


- In October 2019, Public Works applied for a Caltrans Sustainable Transportation Planning Sustainable Communities Grant (Grant) to secure funding for Feasibility Study
- Study would allow City to determine feasibility of converting existing railroad right of way between Harter Parkway and Plumas Street to a bike/pedestrian path
- In June 2020, City was notified it was awarded \$200,000 for the grant, with a local match of \$25,912

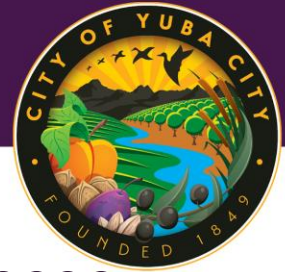
# Feasibility Study for Abandoned Railroad Corridor Proposed Study Area



Proposed  
Study Area



# Feasibility Study for Abandoned Railroad Corridor Analysis



- As part of the General Conditions of Acceptance, City is required to submit a resolution to Caltrans by August 21, 2020, authorizing a signatory for the Grant contract
- Executing such a resolution will allow staff to move the project forward, and issue a Request for Proposal from qualified consultants
- If feasible, converting existing abandoned railroad corridor to pedestrian and bicycle trails will create more opportunities for recreation, exercise, and shopping while significantly enhancing the City's bikeway network

# Feasibility Study for Abandoned Railroad Corridor Fiscal Impact



- Minimal staff costs associated with executing grant documents
- City has received \$200,00 in grant funding with a local match of \$25,912
- Detailed fiscal impacts and any necessary fiscal appropriations will be presented to Council at time of awarding a consultant contract for the Feasibility Study

# Feasibility Study for Abandoned Railroad Corridor Fiscal Impact



- Adopt a resolution authorizing the City Manager to execute and submit all necessary documentation related to the Caltrans Sustainable Transportation Planning, Sustainable Communities Grant

# Feasibility Study for Abandoned Railroad Corridor Fiscal Impact



Questions?