

CITY OF YUBA CITY
STAFF REPORT

Date: October 19, 2021
To: Honorable Mayor & Members of the City Council
From: Public Works Department
Presentation by: Diana Langley, Public Works Director

Summary

Subject: Purchase of one (1) Global M4 Mechanical Sweeper and one (1) Caterpillar 420 Backhoe Loader

Recommendation: A. Authorize the purchase of one (1) Global Environmental Products M4 Mechanical Sweeper to Terry Equipment of Sacramento, CA, in the amount of \$315,861.98 through Sourcewell Open Contract # 122017-GEP, with the finding that it is in the best interest of the City

B. Adopt a Resolution awarding the purchase of a Global Environmental Products M4 Mechanical Sweeper to Terry Equipment of Sacramento, CA, in the amount of \$315,861.98, with the finding that it is in the best interest of the City, and award the associated financing to Bank of America, NA

C. Authorize the purchase of one (1) Caterpillar 420 Backhoe Loader to Holt of California of Sacramento, CA, in the amount of \$158,024.70 through Sourcewell Open Contract # 032119-CAT, with the finding that it is in the best interest of the City

D. Adopt a Resolution awarding the purchase of a Caterpillar 420 Backhoe Loader to Holt of California of Sacramento, CA, in the amount of \$158,024.70, with the finding that it is in the best interest of the City, and award the associated financing to Bank of America, NA

E. Authorize the City Manager to advance funds for the purchase using an interim appropriation with subsequent reimbursement from the Master Equipment Lease/Purchase Agreement with Bank of America

F. Authorize the Finance Director to appropriate \$473,886.68 from the Vehicle Replacement Fund, 6610-69415, for the purchases and 620-49010 for the reimbursement

Fiscal Impact: \$473,886.68 as follows – Vehicle Replacement Fund Account 6610-69415
1. \$315,861.98 – Street Sweeper
2. \$158,024.70 – Backhoe Loader

Purpose:

Purchase a replacement street sweeper for the Streets Division and a replacement backhoe loader for the Water Distribution Division.

Background:**Item 1: Street Sweeper:**

The Streets Division of the Public Works Department currently has two street sweepers: a Ravo 5-iSeries (Ravo) purchased in 2017, and a Tymco regenerative air sweeper (Tymco) purchased in 2003. The Tymco currently has 263,681 miles and has reached the end of its useful life. As of January 2020, the Feather River Air Quality Management District has required that the rear engine of the Tymco be removed from the City's fleet by 2024 due to emission restrictions.

The City has the need for two functional street sweepers for the following reasons:

- Monthly Routine Street Sweeping – The Ravo street sweeper is used full-time, year-round, to perform the monthly routine street sweeping.
- Fall Leaf Season – A second street sweeper is placed into operation in the fall to pick-up leaves citywide.
- Vehicle Accidents and Spills – A second street sweeper is necessary to address clean-up for vehicle accidents and spills in order to not negatively impact the monthly routine street sweeping.
- Service and Breakdowns – When the Ravo sweeper needs to be serviced or has mechanical issues, a second street sweeper is necessary to continue the monthly routine street sweeping.

Item 2: Backhoe Loader:

The Public Works Department currently has a backhoe that was purchased in 1997, which has 8,420 hours of use. The backhoe has numerous mechanical and electrical issues, is costly to maintain, and is extremely unreliable. It has a Tier 0 engine, which has no emission controls, and is banned by the California Air Resources Board to be added to any fleet in California. In addition, the Tier 0 rating negatively impacts the City's average target rate to meet the In-Use Off-Road Diesel-Fueled Fleets Regulation.

Analysis:**Item 1: Street Sweeper:**

Staff has researched replacement street sweepers and determined that a mechanical sweeper would best fit the department's needs. After coordinating several demonstrations of mechanical sweepers from various dealers, staff was impressed with the capabilities of the Global Environmental Products (Global) M4 mechanical sweeper. Terry Equipment of Sacramento is the local distributor for Global sweepers.

Attractive features of the Global M4 mechanical sweeper included:

- The sweeper is built from the ground up to be a sweeper, rather than a sweeper mounted on a truck chassis.
- The 56.5" pick-up broom allows for a wider pass while picking up debris from route sweeping, vehicle accidents, and spills.
- It features a "high side dump" that allows for versatility when dumping debris at the Corporation Yard.

Global has teamed up with Sourcewell, a member-driven cooperative that is designed to help municipalities, state agencies and non-profit organizations purchase equipment, to establish a contract for the purchase of mechanical sweepers.

Lead time for the street sweeper is approximately 6 months.

Item 2: Backhoe Loader:

Staff has researched replacement backhoe loaders and existing Sourcewell contracts. Staff recommends the purchase of a Caterpillar 420 Backhoe Loader from Holt of California. Caterpillar has teamed up with Sourcewell to establish a competitive price for the purchase of backhoe loaders. Staff reached out to three distributors for Caterpillar equipment and Holt of California had the lowest quote at \$158,024.70.

A backhoe is available for delivery upon purchase.

Fiscal Impact:

On August 17, 2021, Council authorized a Master Equipment Lead/Purchase Agreement with Bank of America. The master agreement established a \$3.4 million line of credit that the City can draw down for equipment purchases. To date, Council has authorized equipment purchases in the amount of \$2.85 million, leaving approximately \$550,000 available.

Due to the amount of time it will take to prepare the necessary legal documents with Bank of America to finance the equipment, staff is requesting that Council authorize the City Manager to advance the funds for the purchase of the street sweeper and backhoe loader using an interim appropriation from the Vehicle Replacement Fund with a subsequent reimbursement from the Master Equipment Lease/Purchase Agreement.

Advancing the purchase of the street sweeper and backhoe loader now will allow the City to avoid increases in costs. The purchase price of the Global M4 mechanical sweeper is \$315,861.98 and the purchase price of the Caterpillar 420 backhoe loader is \$158,024.70, for a total of \$473,886.67

Alternatives:

1. Deny the purchase of the mechanical sweeper and direct staff to prepare and issue a formal bid.
2. Deny the purchase of the backhoe loader and direct staff to prepare and issue a formal bid.

Recommendation:

- A. Authorize the purchase of one (1) Global Environmental Products M4 Mechanical Sweeper to Terry Equipment of Sacramento, CA, in the amount of \$315,861.98 through Sourcewell Open Contract # 122017-GEP, with the finding that it is in the best interest of the City.
- B. Adopt a Resolution awarding the purchase of a Global Environmental Products M4 Mechanical Sweeper to Terry Equipment of Sacramento, CA, in the amount of \$315,861.98, with the finding that it is in the best interest of the City, and award the associated financing to Bank of America, NA.
- C. Authorize the purchase of one (1) Caterpillar 420 Backhoe Loader to Holt of California of Sacramento, CA, in the amount of \$158,024.70 through Sourcewell Open Contract # 032119-CAT, with the finding that it is in the best interest of the City.
- D. Adopt a Resolution awarding the purchase of a Caterpillar 420 Backhoe Loader to Holt of California of Sacramento, CA, in the amount of \$158,024.70, with the finding that it is in the best interest of the City, and award the associated financing to Bank of America, NA.
- E. Authorize the City Manager to advance funds for the purchase using an interim appropriation with subsequent reimbursement from the Master Equipment Lease/Purchase Agreement with Bank of America.
- F. Authorize the Finance Director to appropriate \$473,886.68 from the Vehicle Replacement Fund, 6610-69415, for the purchases and 620-49010 for the reimbursement

Attachments:

- 1. Resolution – Street Sweeper
 - a. Terry Equipment Quote
- 2. Global M4 Brochure
- 3. Resolution – Backhoe Loader
 - a. Holt of California Quote

Prepared by:

Diana Langley
Public Works Director

Submitted by:

Dave Vaughn
City Manager

Reviewed by:

City Attorney

ATTACHMENT 1

RESOLUTION NO. _____

**RESOLUTION OF THE CITY COUNCIL OF THE CITY OF YUBA CITY
AWARDING THE PURCHASE OF A GLOBAL ENVIRONMENTAL
PRODUCTS M4 MECHANICAL SWEEPER TO TRACY EQUIPMENT
OF SACRAMENTO, CA**

WHEREAS, the City of Yuba City desires to replace a street sweeper; and

WHEREAS, staff has researched replacement street sweepers and determined that a mechanical sweeper would best fit the Public Works Department's needs; and

WHEREAS, after coordinating several demonstrations of mechanical sweepers from various dealers, staff recommends the purchase of a Global Environmental Products M4 mechanical sweeper; and

WHEREAS, Sourcewell Cooperative awarded Contract No. 122017-GEP to Global Environmental Products of San Bernardino, CA following a nationwide competitive Request for Proposal process; and

WHEREAS, staff has reviewed the equipment specifications and Sourcewell Cooperative pricing and determined them to be fair, reasonable, and appropriate for a backhoe loader; and

WHEREAS, Tracy Equipment of Sacramento, CA, is the local vendor for a Global Environmental Products M4 mechanical sweeper; and

WHEREAS, the City desires to award the purchase of one (1) Global Environmental Products M4 mechanical sweeper to Tracy Equipment through Sourcewell Contract No. 122017-GEP in the amount of \$315,861.98.

NOW, THEREFORE, be it resolved by the City Council of the City of Yuba City that the purchase of a mechanical sweeper be awarded to Tracy Equipment of Sacramento, CA, in the amount of \$315,861.98, with the finding that it is in the best interest of the City. The City Manager or designee is authorized to enter into the contract to purchase the same.

The foregoing Resolution was duly and regularly introduced, passed, and adopted by the City Council of the City of Yuba City at a regular meeting thereof held on the 19th day of October 2021.

AYES:

NOES:

ABSENT:

Marc Boomgaarden, Mayor

ATTEST:

Ciara Wakefield, Deputy City Clerk

APPROVED AS TO FORM
COUNSEL FOR YUBA CITY:

Shannon Chaffin, City Attorney
Aleshire & Wynder, LLP

Attachment(s):

A. Quote from Terry Equipment, Inc.

EXHIBIT A



City of Yuba City
1201 Civic Center Blvd.
Yuba City, CA 95993

September 29, 2021

Attention: Jack McDaniel

We are pleased to provide you a **Sourcewell Contract quote** for our 2020 Global M4HSD 4-Wheel High Speed – High Side Dump – Mechanical Broom Sweeper equipped as follows:

- High Visibility Cab (Glass Entry Door Included)
- 69 dBA In-Cab Noise Level
- Dust & Weather Sealed Cab
- Multi-Adjustable Suspension Seat
- Tilt & Telescoping Steering Wheel
- Tinted Safety Windows & Windshield
- Windshield Wiper/Washer
- Ergonomic Go Pedal
- Coolant Temp, Oil Pressure & Voltmeter Gauges
- Coolant, Eng Oil Pressure & Low Hyd Oil Warning Lts.
- Speedometer, Tachometer & Hourmeter
- Fuel Level Gauge
- 130 amp Heavy-Duty Alternator
- 280 gal (945 L) Polyethylene Water Tank
- Gutter Broom Water Spray Jets
- Pickup Broom Water Spray Jets
- Low Water Level Light in Cab
- 15' (4.6 m) Hydrant Hose with Coupling & Wrench
- Front Spray Bar
- Engine Block Heater
- Centauri Precleaner
- Electrical Systems Locker
- Four Wheel Disk Brakes
- ABS Brake System
- Cab Controlled Leaf Gate System
- LED Stop/Tail Lights, Clearance Lights
- LED Gutter Broom Spotlights
- Sealed Beam Headlights
- 2017 Cummins Engine with 5 gal. DEF Tank

Southern California: 205 W. Slover Ave., Bloomington, CA 92316 - Phone No. (909) 879-1438

Northern California: 4 Wynne Court Bldg. 6, Sacramento, CA 95829 - Phone No. (916) 388-2480

Las Vegas: 2522 Abels Lane, Las Vegas, NV 89115

www.terryequipment.com



- 5.2 cu yd (3.92 cu meter) Hopper (Volumetric)
- Hopper Dump Alarm
- 47" (1194 mm) dia. Gutter Brooms
- In-Cab Gutter Broom Pressure Adjustment
- Tuf-Grip Disposable Gutter Broom Segments
- 32" x 56.5" (813 mm x 1435 mm) Tube Type Pickup Broom
- 58" (1473 mm) Wide Squeegee Type Elevator
- Two 18 gal (68 L) Hydraulic Oil Tanks
- Hydraulic Manifolds in LH Fender
- 18.5' (5.6 m) Turning Radius
- Front & Rear Suspension
- All Sheet Metal Surfaces Primer Powder Coated
- All Sheet Metal Surfaces Powder Coated
- Standard Frame Paint Color Gray
- Standard Hopper/Cab/Fenders Paint Color White
- Fender Mounted Tool Box
- Front & Rear Tie Downs with Tow Hooks
- Left & Right Dual West Coast Mirrors
- Buddy Seat
- PM10 High Quality PUB (Pick Up Broom)
- Load Leveling Device with Hopper Full Indicator
- Heavy Sweeping Package Hydraulic System
- QuickChange Main Broom System
- ERGO SWITCH STANDARD
- REAR VIEW CAMERA STANDARD
- 11-FLIGHT Elevator System & Triple Pump Option
- 1 Sweeper Service Manuals in English
- 1 Sweeper Parts Manuals in English
- 1 Sweeper Operator Manual in English
- 2 Year Elevator Sprocket Warranty

Included Options/Features:

- *Quick Change Main Broom System*
- *Elevator Flusher*
- *Gutter Broom Speed Control*
- *Dual Gutter Broom Tilt*
- *Auxiliary Hopper Raise Option W/Pump*

Southern California: 205 W. Slover Ave., Bloomington, CA 92316 - Phone No. (909) 879-1438

Northern California: 4 Wyne Court Bldg. 6, Sacramento, CA 95829 - Phone No. (916) 388-2480

Las Vegas: 2522 Abels Lane, Las Vegas, NV 89115

www.terryequipment.com



- AM/FM Radio w/CD with Aux & USB Ports
- Auxiliary Power Source
- Seat, High Back, Air, Gray
- Heated & Remote Controlled Mirrors with Heavy Duty Brackets
- Arrow Stick (LED)
- Head Lights (LED)
- Cab Strobe (LED)
- Front Flood Lights Dual Caltrans Style
- Additional Gutter Broom Lights (LED)
- Rear Facing Flood Lights Rear (LED)
- In-Cab Water Tank Gauge
- Remote Grease Block – 9 Positions
- Microtrap (PM-10 Option)
- Rear Flashing LED Strobes
- Front Flashing LED Strobes
- Right Side Front and Back Flashing LED Strobes
- Front Cab mounted Safety Lighting
- Rear Mounted Safety Lighting

2021 Global M4HSD 4-Wheel Mechanical
California Sale Tax @ 7.25%
Total Sourcewell Contract Price F.O.B. Yuba City

\$294,510.00
\$ 21,351.98
\$315,861.98

Sincerely,
Terry Equipment Inc.

Russell Dysard
Area Sales Manager
909-665-0021

Southern California: 205 W. Slover Ave., Bloomington, CA 92316 - Phone No. (909) 879-1438

Northern California: 4 Wyne Court Bldg. 6, Sacramento, CA 95829 - Phone No. (916) 388-2480

Las Vegas: 2522 Abels Lane, Las Vegas, NV 89115

www.terryequipment.com

ATTACHMENT 2



GLOBAL LM4

**High-Speed Purpose-Built Street Sweeper
Designed for Your Needs**

- ▶ 18.5' Turning Radius
- ▶ Cab-Over Design with Unmatched Visibility
- ▶ Large 47" Gutterbrooms designed to clean the curb
- ▶ High-Performance Sweeping Package
- ▶ Unmatched Access to Engine and Sweeping Components
- ▶ Largest in its' class; 5.6 Cubic Yard Hopper with Access Door
- ▶ Lots of Power with Excellent Fuel Efficiency

Available Alternative Fuel Options

- ▶ Compressed Natural Gas
- ▶ Electric Hybrid

Over 50% Fuel Savings

GLOBAL M4

ULTIMATE PERFORMANCE, SPEED AND POWER

From the modern, comfortable and well appointed operator's cab, to the toughest and most rugged mechanical sweeping system ever built, the **Global M4** is designed to take on the worst of the worst sweeping conditions. **Global M4** will outperform the competition in daily sweeping conditions such as heavy sweeping and leaf pick up.

With a Standard Heavy Duty Sweeping Package, **Global M4** will sweep sand, gravel up to **3-Tons per Minute**. The sweeping speed of 3-11 mph allows for a very efficient operation.

The compact design, exceptional maneuverability (**18.5' Turning Radius**), perfect for any cul-de-sac, and superb visibility make this a perfect choice for any municipal/ governmental agency that is looking for a street sweeper that can simply fit and reduces travel time.

Global M4 Standard Equipment

- Air Conditioned and Pressurized Cab
- In-Cab Gutterbroom Pressure Adjustment
- Rear View Camera and LCD Monitor
- Leaf Gate System
- Heavy Sweep Package
- Hopper Access Door
- Hopper Automatic Safety Props

Global M4 Options

- 100% Stainless Steel Hopper
- In-Cab Gutterbroom Tilt
- In-Cab Gutterbroom Speed Control
- AM/FM/CD Stereo with AUX/USB Port & BlueTooth
- Air-Ride Seat
- Elevator and Hopper Wash-Out
- Automatic Greasing System
- (SCAQMD) PM-10 Water System
- Power and Heated Mirrors



THE BEST PURPOSE-BUILT SWEEPER IN THE INDUSTRY

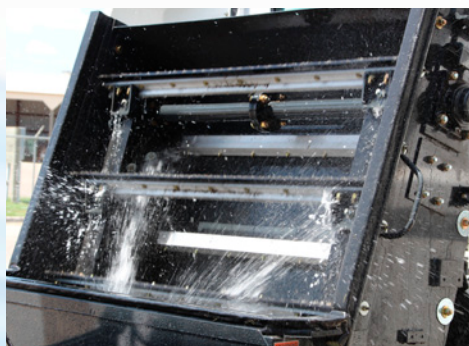


The inherent design of the **Global M4** makes it the logical choice among heavy-duty mechanical sweepers. With the center mounted/cab forward layout the operator has unsurpassed visibility of the road surface as well as pedestrians and surrounding traffic. The large hopper capacity equals more lane miles swept between dump cycles and the **18.5-foot turning radius** makes the **Global M4** highly efficient and comfortable.

LONG LASTING Polyurethane Dirt Shoes are designed so that operator can sweep over potholes and rail road tracks and will not damage while sweeping. **Long Life of 1000 hours** is guaranteed. **47" Gutterbrooms** assist in cleaning curbs and heavy Road Millings.



DUST SUPPRESSION SYSTEM • **Global M4** includes **250-Gallon Water Tank Capacity** combined with Two(2) Diaphragm Water pumps and Two(2) Modes (LOW/HIGH) provide versatility and superb dust control.



HEAVY SWEEP PACKAGE Elevator Type: Standard 11 Flight squeegee with replaceable corded rubber tips; Continuous molded rubber belts combined with standard Heavy Sweep Package make **Global M4** the logical choice for sweeping heavy debris such as road millings, sand and gravel up to **3-Tons per-Minute**. That is one ton of sand every 20 seconds! Standard leaf gate system assists in picking up large debris, bottles, large branches and leaves.



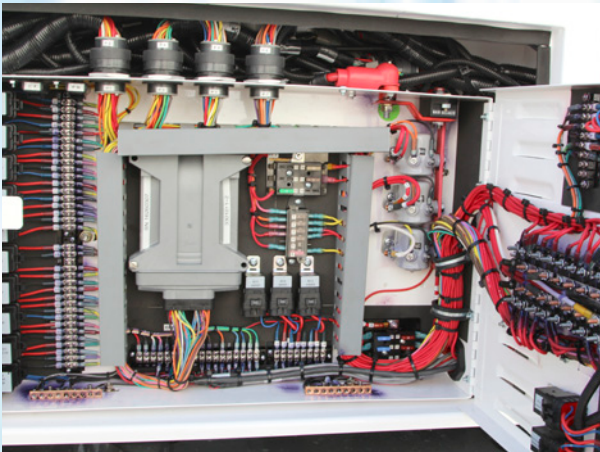
Global M4 includes a **5.6 cu/yd hopper capacity** compared to 4.5 cu/yd for competitive machines resulting in more curb miles swept between dump cycles. With near Full Useable Capacity, 12,000 Lift Capacity, and the Optional Elevator and Hopper Wash Out System, **Global M4 is Affordable, Reliable and Innovative.**

GLOBAL M4

THE BEST PURPOSE-BUILT SWEEPER IN THE INDUSTRY



THREE POWERFUL BROOMS *Optional* Front Articulating brush allows for extra reach to shoulders and center islands. Via In-cab joystick, the articulating front brush can be positioned on left or right side allowing for sweeping on right or left without changing seating positions.

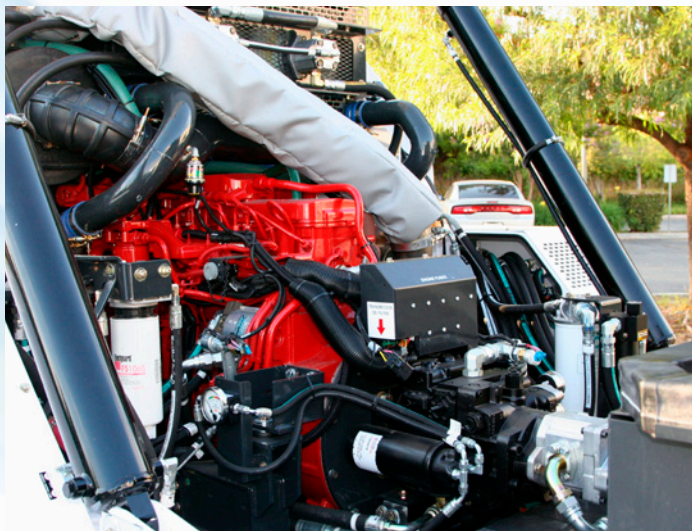


EASY TROUBLESHOOTING

A centralized, weatherproof systems locker fully protects electrical components from the elements while it allows maintenance staff easy accessibility for inspection and troubleshooting.

SINGLE ENGINE DESIGN REDUCES MAINTENANCE COSTS

Cummins ISB 6.7L 280 HP turbocharged Engine offers superb performance, less maintenance, and exceptional fuel savings compared to Dual Engine Street Sweepers, while meeting 2019 EPA/CARB Certification.



ACCESS IT ALL The Global M4 features many maintenance-friendly attributes, such as a rear swing-out radiator, easy access front mounted AC condenser, brake and windshield washer fluid reservoirs, and cab fresh air filter.

REAR VIEW CAMERA IS STANDARD Rear view camera with In-Cab 7" LCD Monitor is standard on every Global Street Sweeper.



IT'S ALL IN THE OPEN Hydraulic Hoses are NOT hidden in the frame of the sweeper, while all Manifolds and Filters are located in a central location.

The Global M4 features many maintenance-friendly attributes, such as access to the engine, alternator, drive belt, and hydraulic oil cooler.





GLOBAL M4



Global Environmental Products Inc. offers equipment with uncompromising performance, consistent quality, durability and reliability. Our comprehensive range of machines provide the right cleaning equipment for your application. Please contact us for a demonstration at (909) 713-1600.

- ▶ Reliable / Durable Equipment
- ▶ Innovative Engineering / Design
- ▶ Industry Leading Reputation
- ▶ Dedicated Customer Service
- ▶ Outstanding Sales Professionals
- ▶ Fast Parts and Service
- ▶ National Dealer Network

www.GlobalSweeper.com

MADE IN THE USA 

Sold and Serviced by:



ISO
9001:2015
CERTIFIED

Global Environmental Products

5405 Industrial Parkway
San Bernardino, CA 92407 USA

909-713-1600

info@globalsweeper.com



ATTACHMENT 3

RESOLUTION NO. _____

**RESOLUTION OF THE CITY COUNCIL OF THE CITY OF YUBA CITY
AWARDING THE PURCHASE OF A CATERPILLAR 420 BACKHOE
LOADER TO HOLT OF CALIFORNIA OF SACRAMENTO, CA**

WHEREAS, the City of Yuba City desires to replace a backhoe loader; and

WHEREAS, staff has researched replacement backhoe loaders and determined that a Caterpillar backhoe loader would best fit the Public Works Department's needs; and

WHEREAS, Sourcewell Cooperative awarded Contract No. 032119-CAT to Caterpillar of Peoria, IL, following a nationwide competitive Request for Proposal process; and

WHEREAS, staff has reviewed the equipment specifications and Sourcewell Cooperative pricing and determined them to be fair, reasonable, and appropriate for a backhoe loader; and

WHEREAS, Holt of California of Sacramento, CA, is the local vendor for a Caterpillar 420 backhoe loader; and

WHEREAS, the City desires to award the purchase of one (1) Caterpillar 420 Backhoe Loader to Holt of California through Sourcewell Contract No. 032119-CAT in the amount of \$158,024.70.

NOW, THEREFORE, be it resolved by the City Council of the City of Yuba City that the purchase of a backhoe loader be awarded to Holt of California of Sacramento, CA, in the amount of \$158,024.70, with the finding that it is in the best interest of the City. The City Manager or designee is authorized to enter into the contract to purchase the same.

The foregoing Resolution was duly and regularly introduced, passed, and adopted by the City Council of the City of Yuba City at a regular meeting thereof held on the 19th day of October 2021.

AYES:

NOES:

ABSENT:

Marc Boomgaarden, Mayor

ATTEST:

Ciara Wakefield, Deputy City Clerk

APPROVED AS TO FORM
COUNSEL FOR YUBA CITY:

Shannon Chaffin, City Attorney
Aleshire & Wynder, LLP

Attachment(s):

A. Quote from Holt of California

EXHIBIT A

September 21,
2021

CITY OF YUBA CITY PUBLIC WORKS
DEPARTMENT
Account # 6435500
PUBLIC WORKS DEPARTMENT
1201 CIVIC CENTER BLVD
YUBA CITY, California 95993 3005
Attention: TIM BYBEE

New Caterpillar Model: 420 Backhoe Loaders with all standard equipment in addition to the additional specifications listed below:

STOCK NUMBER: **M22714** SERIAL NUMBER: **0H8T01715** YEAR: **2021** SMU: **3**

ADDITIONAL SPECIFICATIONS

Reference #	Description of Material and Equipment	Reference #	Description of Material and Equipment
542-7992	420 07A BACKHOE LOADER	543-4284	STICK, EXTENDABLE, 14FT
567-5090	AUTO-UP STABILIZERS	542-7780	ENGINE, 82KW, C3.6 DITA, T4F
548-1231	LINES, COMBINED AUX, E-STICK	544-0883	CAB, DELUXE
423-7607	PLATE GROUP - BOOM WEAR	491-6734	WORKLIGHTS (8) HALOGEN LAMPS
382-2499	MIRRORS, EXTERNAL, BOTH SIDES	573-4524	SEAT, DELUXE FABRIC
542-7810	AIR CONDITIONER, T4F	560-6797	PRODUCT LINK, CELLULAR, PLE643
544-1059	PT, 4WD/2WS, AUTOSHIFT, LTC	337-9696	COUNTERWEIGHT, 1015 LBS
545-5048	DISPLAY, TOUCH SCREEN	9R-6007	STABILIZER PADS, FLIP-OVER
379-2161	TIRES, 12.5 80/19.5L-24, GY	337-7436	BUCKET-MP, 1.3 YD3, PO
555-2396	LINES, HYD CPLR 14FT EXT PILOT	9R-5321	CUTTING EDGE, TWO PIECE
485-5303	COUPLER, PG, HYD. D. LOCK, BHL	551-6453	RIDE CONTROL
387-6682	FAN	540-2298	RADIO, FM BLUETOOTH
516-5913	BATTERY, HEAVY DUTY	219-3411	BUCKET-HD, 12", 2.8 FT3
353-1389	GUARD, STABILIZER	219-3386	BUCKET-HD, 18", 4.2 FT3
545-8548	LOADER BUCKET PINS	282-5409	THUMB, HYDRAULIC, NO TINE, BHL
573-0397	DISPLAY, SECURITY, ENABLED	221-4283	THUMB, TINE, A 3
542-7774	HYDRAULICS, MP, 6FCN8BNK, ST	517-6993	WHEEL, 18", BL

WARRANTY INFORMATION

Standard Warranty: 12 months / unlimited hours
Extended Warranty: **420-36 MO/3000 HR POWERTRAIN + HYDRAULICS + TECH**
 CSA Dry Parts Kit - 36 MO/1500 HR

SELL PRICE	\$183,410.28
EXT WARRANTY	Included
SOURCEWELL CONTRACT #032119-CAT DISCOUNT	(\$36,067.90)
NET BALANCE DUE	\$147,342.38
SALES TAX (7.25%)	\$10,682.32
CSA	Included
AFTER TAX BALANCE	\$158,024.70

F.O.B./TERMS: EMD - PLEASANT GROVE 7518

Quote 133703-01

This quote is good for (30) days. Any machine quoted outside of HOLT of CALIFORNIA's inventory is subject to revision All quotes are subject to credit approval and prior sale. Any quoted interest rates are subject to change without notice. Quote is void unless machine is delivered, and remains, within HOLT of CALIFORNIA's Dealership territory for two years or unless the machine has at least 1000 hours if delivered outside of Holt's territory.

THE ADDITIONAL TERMS AND CONDITIONS ON THE REVERSE SIDE ARE PART OF AND INCORPORATED IN THIS AGREEMENT. THIS AGREEMENT SHALL NOT BE CONSIDERED ENFORCEABLE UNTIL ACCEPTED BY HOLT AND EXECUTED BY ITS OFFICE. ANY INDIVIDUAL SIGNING THIS AGREEMENT REPRESENTS AND WARRANTS THAT HE/SHE IS AT LEAST 18 YEARS OLD AND HAS THE AUTHORITY TO BIND CUSTOMER TO THE TERMS OF THE AGREEMENT.

Accepted by _____
(Please Print)

Date, _____

Signature _____

Sincerely,
Collin Turk
Territory Manager
Holt of California
cturk@holtca.com
9163359357